

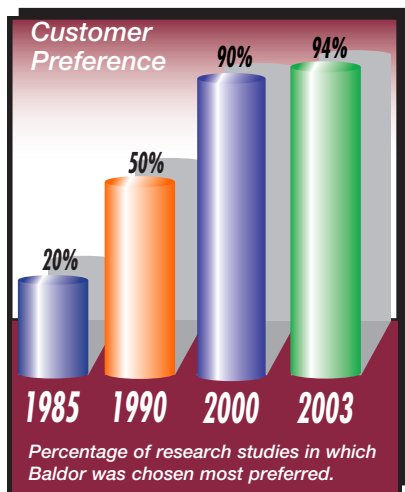
# **Baldor DC Controls Fractional - 5 Hp**



**BALDOR®**

## Why Baldor?

For over 85 years, Baldor has strived to provide customers with the best value and reliability in industrial electric motors. That dedication shows in customer preference for Baldor motors. To be considered as the most preferred...



**Baldor offers the industry's broadest line of stock products.** Save valuable time with just one call to Baldor. We offer more than 7,000 stock motors, drives and gearboxes.

**Energy-efficiency leader.** We began lowering the energy consumption of our motors in the 1920s, long before others were even talking about it. Today, our expansive line of Super-E® premium-efficient motors ranges from 1 through 1250 Hp. Baldor's Super-E® line offers customers the highest overall efficiency levels in the industry.



**Baldor products are available at more locations than any other brand.** Our 35 district offices across North America offer immediate availability of Baldor products to thousands of distributors.

**Continuous innovation to improve reliability.** Baldor leads the motor industry in applying new technologies to improve motor reliability. Recent improvements to the line of Severe Duty motors are further proof that Baldor is the leader in motors for process industry applications. These improvements are explained in detail in the following pages.

### Industry's shortest lead times/Flexible manufacturing.

Baldor has the industry's shortest lead times on custom motors – just ten working days. Our unique FLEX FLOW™

manufacturing process lets us produce any order in any quantity, quickly and efficiently.



**Industry's best information.** Only Baldor offers customers so many choices for product information with a wide variety of catalogs and product brochures, a CD-ROM electronic catalog, the Baldor Web site ([www.baldor.com](http://www.baldor.com)), or you may talk to a Baldor customer service person at one of our sales offices.

## Table of Contents

	Page
• Why Baldor?	2
• Overview	3
• NEMA 1 Enclosed DC Controls	3
• One Way – Open Chassis Mount Controls	4
• One Way DC Control Accessories	5
• NEMA 4X Controls	6
• NEMA 4X Control Accessories	7
• Line Regen – Open Chassis Mount	8
• Line Regen Accessories	8-9
• NEMA Enclosed DC Control Specifications	10
• Chassis Mount DC Control Specifications	11
• Dimension Diagrams	12-15
• District Offices	Back Cover

## Baldor DC Controls for a Variety of Applications

Baldor DC Drives provide exceptional value with features you might not expect to find on miniature controls. From 1/100 Hp up to 5 Hp in both 115V and 230V inputs, we've got you covered for operating standard 90V-130V or 180Vdc motors. All mini-DC drives can operate Permanent Magnet or Shunt Wound DC motors. These DC drives are offered in open frame packages, NEMA 1 packages, and NEMA 4X washdown ratings.

"One-way" controls offer an economical solution when the motor rotates in one direction, and only needs to control speed. Additional mechanical switches and dynamic brakes (resistors) are used if reverse direction is required by the application. If the load requires torque regulation, also known as tensioning, our line of regenerative controls offers the solution. Regenerative controls are convenient for overhauling loads where the energy can be returned back to the power grid instead of dissipated through a braking resistor. These controls use electronics to reverse direction instead of hand switches, thus providing longer life than the mechanical alternatives. Best of all, each and every solution shown here is in stock and available for delivery, today!

Current Limit features of the drive are offered by either plug-in Horsepower Resistors® or by jumper selections. By using Horsepower Resistors®, the current scaling can be adjusted and one control can be used for many different motor load ratings.

The acceleration, deceleration, current limits, and other features are adjusted using 270° potentiometers which are easy to configure, eliminating the need to remember and maintain sets of parameters. A potentiometer adjustment tool is provided by Baldor. A Speed potentiometer is included with every control, whether mounted to the control in an enclosed unit, or externally on an open chassis unit.



## NEMA 1 Enclosed DC Controls for PMDC and Shunt Wound Motors

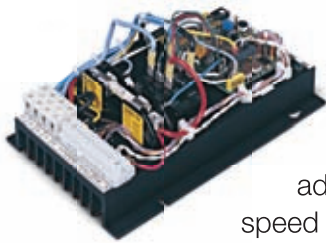


NEMA 1 Enclosed controls are Baldor's most popular miniature series of DC drives. These controls offer a speed potentiometer and ON/OFF switch mounted to the control cover. The controls are ready to go simply by connecting the line leads, motor leads, and the correct Horsepower Resistor®. Available from 1/100 Hp to 1 Hp, and when equipped with an optional heat sink offered by Baldor, these controls can be upgraded to 2 Hp. Standard features include acceleration, deceleration, current limit, IR comp and min/max speed potentiometers. Accessories, such as a Forward-Brake-Reverse Switch, or an Electronic Potentiometer can be used with the control.

Hp Range	Catalog Number	Approximate Shipping Weight Lbs.	Input Voltage
1/100-1/3	BC138	1	115
1/50-3/4	BC139	1	230
1/100-2 (1)	BC140	3	115/230
1/100-2 (1)	BC140-FBR	3	115/230

**NOTE:** (1) To achieve 1 Hp at 115V and 2 Hp at 230V requires BC143 heat sink. See page 4 for accessories.

## One Way – Open Chassis Mount Controls



One Way Open Chassis Mount controls featuring open construction for use in panels begin at 1/100 Hp and extend to 5 Hp. These controls are ready for either Permanent Magnet (PM) or Shunt Wound DC motors. The control features adjustable acceleration, deceleration, current limit, IR comp, minimum and maximum speed potentiometers. They also feature an anti-demagnetization circuit to protect PM motors. Packaged with these controls are line and armature fuses along with the appropriate Horsepower Resistor® or jumper selection. They are UL and cUL approved. Open Chassis mount controls offer the most economical solution when selecting a miniature DC control.

Hp Range	Catalog Number	Approximate Shipping Weight Lbs.	Input Voltage
1/100 - 1 1/2 (2)	BC141	1	115
1/100 - 3 (2)	BC142	2	230
1/100 - 1 1/2 (2) 1/50-3 (2)	BC142-6	1	115/230
5	BC155	5	230

**NOTE:** Above controls include 5k speed potentiometer.  
 (2) 1-1.5 Hp at 115 Volts and 2-3 Hp at 230 Volts, requires BC143 Heat sink kit.  
 BC155 Includes integral heat sink.



## One Way DC Control Accessories



**BC24-LF – AC Line Filter** for use with CE applications like those found in European countries.



**BC147 – Barrier Terminal board.** Converts the quick connect terminals to a terminal block.



**BC143 – External Heatsink** for BC140, BC140-FBR, BC141, BC142. Allows the HP rating to be doubled and provides longer life to the control by providing a better cooling method to the control.



**BC148 – Replacement Potentiometer Kit.** Panel mount 5Kohm/3W potentiometer.



**BC144 – Forward-Brake-Reverse Kit for BC140.** Provides a means of reversing the motor and braking to a stop with built-in dynamic braking resistor.



**BC149 – Knob and Dial Kit.** Used along with the BC148, provides a knob and indicator plate for panels.



**BC151 – Electronic Speed Potentiometer.** Replaces the standard analog potentiometer with two digital inputs that increase and decrease speed.



**BC145 – Signal Isolator Board.** Provides analog input isolation from non-isolated sources. Input voltage can be 0-25Vdc or 0-250Vdc (jumper selectable). Also contains an isolated enable input.



**BC152 – Barrier Terminal Board with Signal Isolator** for BC141 and BC142. Provide a simple means of isolating the analog inputs along with providing a 12V source to be used for transducers or other analog devices.



**BC146 – Current Sensing Relay/Overload Protector.** Provides an adjustable current sensing relay with N.O. and N.C. contacts rated at 230V/5A.



**BC218 - DIN Rail Mounting kit.** Provides a means of mounting the control onto DIN Rail. Can be used on BC141, BC142, and BC204.

## NEMA 4X Controls – One Way and Regenerative



One Way and Regenerative controls are available in NEMA 4X enclosures to handle high-pressure washes and noncorrosive environments. They are offered in both black or FDA approved white paint for food processing environments. These controls have LED diagnostics for Start/Stop and Fault conditions, and are offered from 1/2 Hp up to 3 Hp. Accessories, including electronic FWD-BRK-REV switches and Analog Isolation kits, are available.

Hp Range	Catalog Number	Description Input Voltage / Max. Hp	Approximate Shipping Weight Lbs.	Input Voltage
<b>NEMA 4X SCR (black)</b>				
1/4-2	BC154	120V - 1 Hp, 230V - 2 Hp	5	115/230
3	BC160	230V - 3 Hp	3	230
<b>NEMA 4X Washdown Duty SCR (white)</b>				
1/4-2	BCWD140	120V - 1 Hp, 230V - 2 Hp	6	115/230
<b>NEMA 4X Washdown Duty Line Regen SCR (black)</b>				
1/8-2	BC254	120V - 1 Hp, 230V - 2 Hp (5)	5	115/230
<b>NEMA 4X Washdown Duty PWM DC (black) (6)</b>				
1/4-2	BC354	120V - 1 Hp, 230V - 2 Hp	5	115/230

**NOTE:** (5) See page 7 for BC254 accessories.

(6) Output current is 7.5 amps; Output voltage is 140VDC for 115VAC input - 280VDC for 230VAC input. Motors designed for these voltages will give the best performance.

## NEMA 4X Control Accessories



**BC153 – Electronic Forward Dynamic Brake Reverse Kit** for BC154 and BC354 controls. Provides anti-plug instant reverse and solid state dynamic braking. The circuitry senses armature voltage and permits armature switching to take place only when current levels are near zero. This eliminates contact arcing normally associated with relay reversing circuits. Braking is achieved via an electronic circuit utilizing an SCR and brake resistor. An LED indicates when the BC153 is in the brake mode. Operation is made via a SPDT switch with center off. Wiring is made via quick-connect terminals.



**BC156 – Mechanical Forward Dynamic Brake Reverse Switch** for BC154 and BC354 controls.

The F-B-R switch assembly is designed to provide reversing and dynamic braking. The switch contains a special hesitation action which prevents the operator from switching instantaneously from forward to reverse (or reverse to forward). This eliminates the possibility of "instant reversing" which could damage the motor and control. After switching from forward to brake the switch lever must be released by the operator before it can be switched into reverse. In the brake position the output of the control is extinguished via an inhibit circuit and a dynamic brake resistor is applied across the armature.



**BC157 – Run/Jog Switch** for BC154, BC160, BC354. A toggle switch provides a means of switching from Run Mode to Jog Mode.



**BC158 – Auto/Manual Installation Kit** for BC145 Signal Isolator for models BC154, BC160, BC354. Allows input signal to be switched from on-board Potentiometer to remote signal that is being conditioned by the signal isolator.



**BC159 – AC Line Switch Kit** for BC154, BCWD140, BC254, BC354. Provides a disconnect from the AC line voltage. Note: These drives are factory shipped with the BC159 installed. This is only used for spare parts.

## Line Regen – Open Chassis Mount

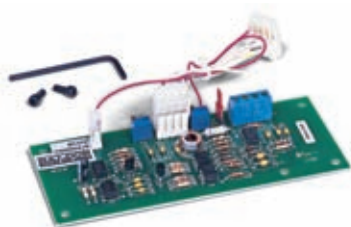


Line Regen Open Chassis Mount controls feature open construction for use in panels beginning at 1/100 Hp and extend to 5 Hp. These controls are ready for either Permanent Magnet (PM) or Shunt Wound DC motors. The control features adjustable acceleration, deceleration, current limit, IR comp, minimum and maximum speed potentiometers. They also feature an anti-demagnetization circuit to protect PM motors. Packaged with these controls are line and armature fuses along with the appropriate Horsepower Resistor® or jumper selection. They are UL and cUL approved. Open Chassis mount controls offer the most economical solution when selecting a miniature DC control.

Hp Range	Catalog Number	Description Input Voltage / Max. Hp	Approximate Shipping Weight Lbs.	Input Voltage
<b>Line Regen SCR</b>				
1/8-2 (7)	BC204	120V 1 Hp, 230V 2 Hp	3	115/230
1/4-2	BC200	120V 1 Hp, 230V 2 Hp	4	115/230
1/4-3	BC201	120V 1-1/2 Hp, 230V 3 Hp	1	115/230
5	BC203	230V 5 Hp	1	230
<b>NEMA 4X Washdown Duty Line Regen SCR</b>				
1/8-2	BC254	120V - 1 Hp, 230V - 2 Hp	5	115/230

**NOTE:** (7) 1 Hp at 115 volts and 2 Hp at 230 volts requires BC143 heatsink kit.

## Accessory for BC200, BC201 and BC203



**BC212 – Bipolar signal isolator board.** Provides analog input isolation from non-isolated sources. Input voltage can be 0-25Vdc or 0-250Vdc (jumper selectable). Also contains an isolated enable input.



## Accessories for BC204



### **BC143 – External Heat Sink for BC204.**

Allows the Hp rating to be doubled and provides longer life to the control by providing a better cooling method to the power devices.



### **BC215 – Bipolar signal isolator board.**

Provides analog input isolation from non-isolated sources. Input voltage can be 0-25Vdc or 0-250Vdc (jumper selectable). Also contains an isolated enable input.



### **BC216 – Multispeed Board.**

Provides four (4) user selectable preset speeds via a contact closure or open collector. The motor speed for each preset is adjustable via trimpot settings. Motor direction is set by the switch position (forward/reverse) which is provided for each preset.



### **BC218 – DIN Rail Mounting kit.**

Provides a means of mounting the control onto Din Rail. Note: Also can be used on BC141, BC142.

## Accessories for BC254



### **BC245 – Signal Isolator board.**

Provides analog input isolation from non-isolated sources. Input voltage can be 0-25Vdc or 0-250Vdc (jumper selectable). Also contains an isolated enable input.



### **BC253 – FWD/STOP/BRK/REV switch.**

Provides a mechanical method to change motor direction.



**BC 258 – Auto/manual switch** – Allows input signal to be switched from on-board Potentiometer to remote signal that is being conditioned by the signal isolator.



**BC259 – AC Line switch.** Provides a disconnect from the AC line voltage. Note: These drives are factory shipped with the BC259 installed. This is only used for spare parts.

## NEMA Enclosed DC Control Specifications

Features	Catalog Number					
	BC138	BC139	BC140 or BC140-FBR	BC154	BC160	BCWD140
Enclosure	NEMA 1	NEMA 1	NEMA 1	NEMA 4X	NEMA 4X	NEMA 4X Washdown
Control Type	NEMA K	NEMA K	NEMA K	NEMA K	NEMA K	NEMA K
AC Line Input	115	230	115 230	115 230	230	115 230
DC Armature Voltage Nominal	90	180	90 180	90 180	180	90 180
Shunt Field Power Supply Voltage - DC	50/100	100/200	50/100 100/200	50/100 100/200	100/200	50/100 100/200
Rated Horsepower Range	1/100 - 1/3	1/50-3/4	1/100-1 1/50-2	1/50-1 1/25-2	3	1/50-1 1/25-2
External Heat Sink (BC143) Required	No	No	1 Hp 2Hp	Not Required	Not Required	Not Required
Speed Range (Motor May Be 20: 1 Constant Torque)	50:1	50:1	50:1	50:1	50:1	50:1
Adjustable Acceleration Time	Yes	Yes	Yes	Yes	Yes	Yes
Adjustable Deceleration Time	Yes	Yes	Yes	Yes	Yes	Yes
Minimum Speed Adjustable	Yes	Yes	Yes	Yes	Yes	Yes
Maximum Speed Adjustable	Yes	Yes	Yes	Yes	Yes	Yes
Current Limit Adjustable	Yes	Yes	Yes	Yes	Yes	Yes
Adjustable Current Limit and Trip Out Type	No	No	No	Timed or Non-Timed	Timed or Non-Timed	Timed or Non-Timed
Control Of Speed or Torque	Speed	Speed	Speed	Speed or Torque	Speed or Torque	Speed or Torque
IR Compensation Adjustable	Yes	Yes	Yes	Yes	Yes	Yes
Tachometer Feedback Input	No	No	No	Yes	Yes	Yes
Plug-In Horsepower Resistor ®	Required	Required	Required	N/A	N/A	N/A
UL & cUL Listing, CE	Yes	Yes	Yes	Yes	Yes	Yes
AC Line Fuse	Included	Included	Included	External	External	External
DC Armature Fuse	Included with Hp Resistor	Included with Hp Resistor	Included with Hp Resistor	Not Supplied with Control	External	Not Supplied with Control
<b>Options</b>						
AC Line Switch	Standard	Standard	Standard	Opt - BC159	No	Standard
Forward/Brake/Reverse Switch	No	No	Opt-BC144	Opt-BC156	No	Standard
Mechanical	No	No	No	Opt-BC153	No	Opt-BC153
Electronic						
Run/Jog Switch	No	No	No	Opt-BC157	Opt-BC157	Standard
Input Signal						
Following Mode Capability	No	No	Opt-BC145	Internal Mount	Internal Mount	External Mount
Current (1-5, 4-20, 20-50mA)			Opt-BC145	Opt-BC145	Opt-BC145	Opt-BC145
Voltage (0-25,0-120, VDC)				Standard (0-5,0-10 VDC)	Standard (0-5,0-10 VDC)	Standard (0-5,0-10 VDC)
Electrical Connection To Control Barrier Terminal Block	Standard	Standard	Standard	Standard	Standard	Standard
Current Sensing Relay/Overload Protector	No	No	Opt - BC146	Standard	Standard	Standard
Electronic Speed Potentiometer	No	No	Opt-BC151	Opt-BC151	Opt-BC151	Opt-BC151
AC Line Filter for CE	Opt-BC24-LF	Opt-BC24-LF	Opt-BC24-LF	Opt-BC24-LF	Opt-BC24-LF	Opt-BC24-LF

## Chassis Mount DC Control Specifications

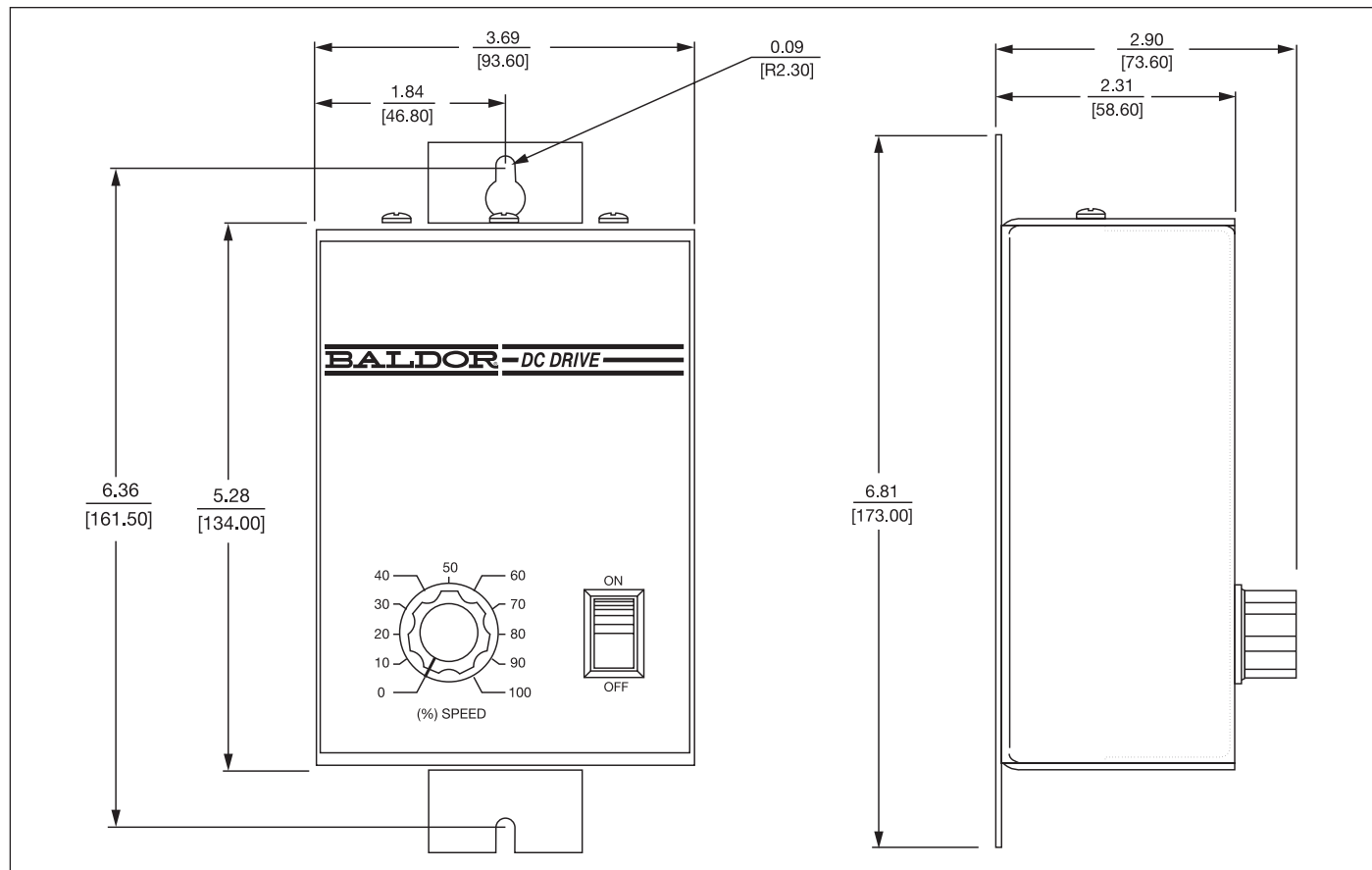
Features	Catalog Number							
	BC141	BC142	BC142-6	BC155	BC204	BC200	BC201	BC203
Enclosure	Chassis	Chassis	Chassis	Chassis	Chassis	Chassis	Chassis	Chassis
Control Type	NEMA K	NEMA K	NEMA K	NEMA K	Regenerative	Regenerative	Regenerative	Regenerative
AC Line Input	115	230	115 230	230	115 230	115 230	115 230	230
DC Armature Voltage Nominal	90	180	90 180	180	90 180	90 180	90 180	180
Shunt Field Power Supply Voltage - DC	50/100	100/200	50/100 100/200	50/100 100/200	50/100 100/200	50/100 100/200	100/200	100/200
Rated Horsepower Range	1/100-1.5	1/50-3	1/100-1 1/2 1/50-3	5	1/8-1 1/4-2	1/4-1 1/2-2	1/4-1-1/2 1/2-3	5
External Heat Sink (BC143) Required	1 Hp-Up	2 Hp-Up	1/2 Hp-Up 1 Hp-Up	Not Required	90V-1Hp 180V-2Hp	Not Required	Not Required	Not Required
Speed Range (Motor may be 20:1 Constant Torque)	50:1	50:1	50:1	50:1	50:1	50:1	50:1	50:1
Adjustable Acceleration	Yes	Yes	Yes	Yes	Yes Fwd & Rev	Yes Fwd & Rev	Yes Fwd & Rev	Yes Fwd & Rev
Adjustable Deceleration	Yes	Yes	Yes	Yes	Regen	Regen	Regen	Regen
Min.. Speed Adjustable	Yes	Yes	Yes	Yes	No	No	No	No
Max. Speed Adjustable	Yes	Yes	Yes	Yes	Yes	Yes	Yes	Yes
Adjustable Current Limit and Tripout Type	Non Timed	Non Timed	Non Timed	Non Timed	Non Timed	Timed	Timed	Timed
Control of Speed or Torque	Speed	Speed	Speed	Speed Torque	Speed or Torque	Speed or Torque	Speed or Torque	Speed or Torque
IR Compensation Adjustment	Yes	Yes	Yes	Yes	Yes	Yes	Yes	Yes
Tachometer Feedback Input	Yes	Yes	Yes	Yes	Yes	Yes	Yes	Yes
Plug-in Horsepower Resistor®	Required	Required	Required	N/A	N/A	N/A	N/A	N/A
UL & cUL Listing, CE	Yes	Yes	Yes	Yes	Yes	Yes	Yes	Yes
AC Line Fuse	Included	Included	Included	External	External	Included	Included	External
DC Armature Fuse	Included with Hp Resistor	Included with Hp Resistor	Included with Hp Resistor	Included with Hp Resistor	External	Included with Hp Resistor	Included with Hp Resistor	External

### Options

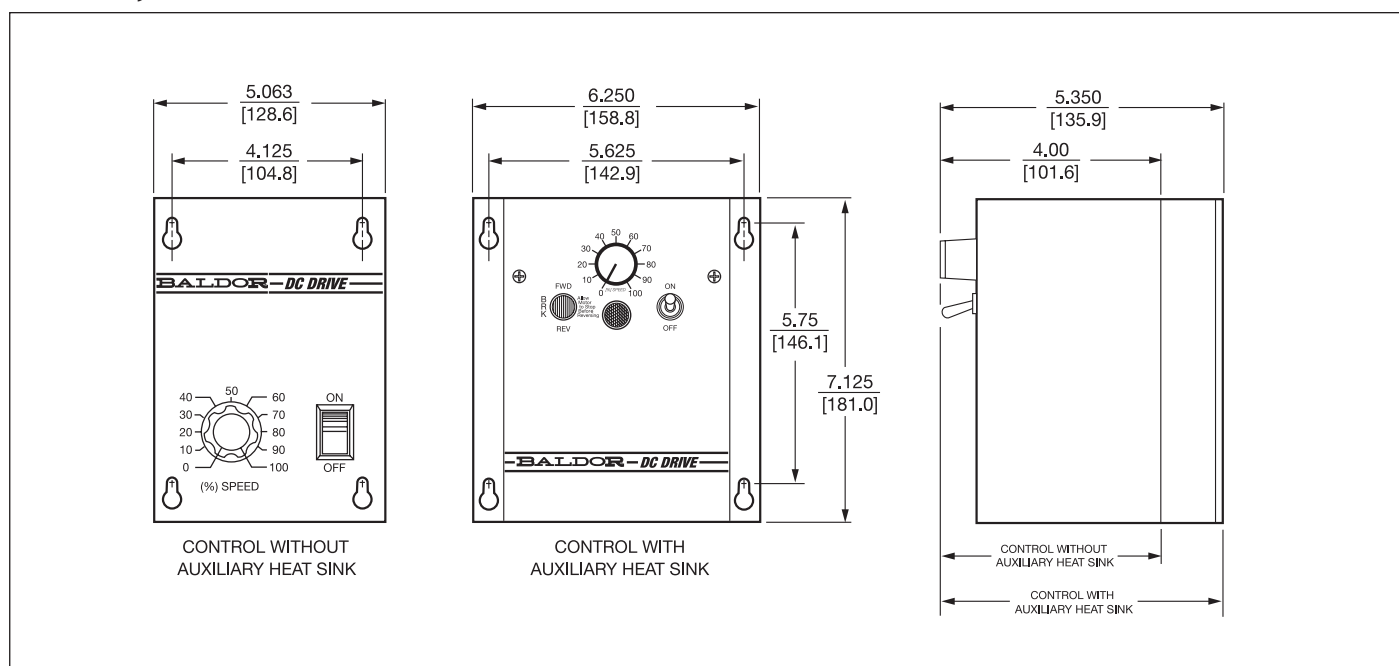
Input Signal Following Mode Capability Current (1-5,4-20,20-50 mA) Voltage (0-25, 0-120, VDC) 0-25, 0-120, VDC)	Opt-BC145 Opt-BC145 No	Opt-BC145 Opt-BC145 No	Opt-BC145 Opt-BC145 No	Opt-BC145 Std 0-10 VDC No	No Std Opt BC215 with BC214	No Std 0-±10 VDC Opt-BC212	No Std 0-±10 VDC Opt-BC212	No Std 0-±10VDC Opt-BC212
Electrical Connection To Control Push-On Quick Connects Barrier Terminal Block	Standard Opt-BC147	Standard Opt-BC147	Standard Opt-BC147	No Standard	Standard N/A	No Standard	No Standard	No Standard
Current Sensing Relay/ Overload Protector	Opt-BC146	Opt-BC146	Opt-BC146	Opt-BC146	N/A	Standard	Standard	Standard
Regenerative Accel / Decel Board	No	No	No	No	No	Opt BC211	Opt BC211	Opt BC211
Electronic Speed Potentiometer	Opt BC151	Opt BC151	Opt BC151	Opt BC151	Opt BC151	Opt BC151	Opt BC151	Opt BC151
AC Line Filter for CE	Opt-BC24-LF	Opt-BC24-LF	Opt-BC24-LF	Opt-BC24-LF	Opt-BC24-LF	Opt-BC24-LF	Opt-BC24-LF	Opt-BC24-LF

## Dimension Diagrams

### BC138, BC139

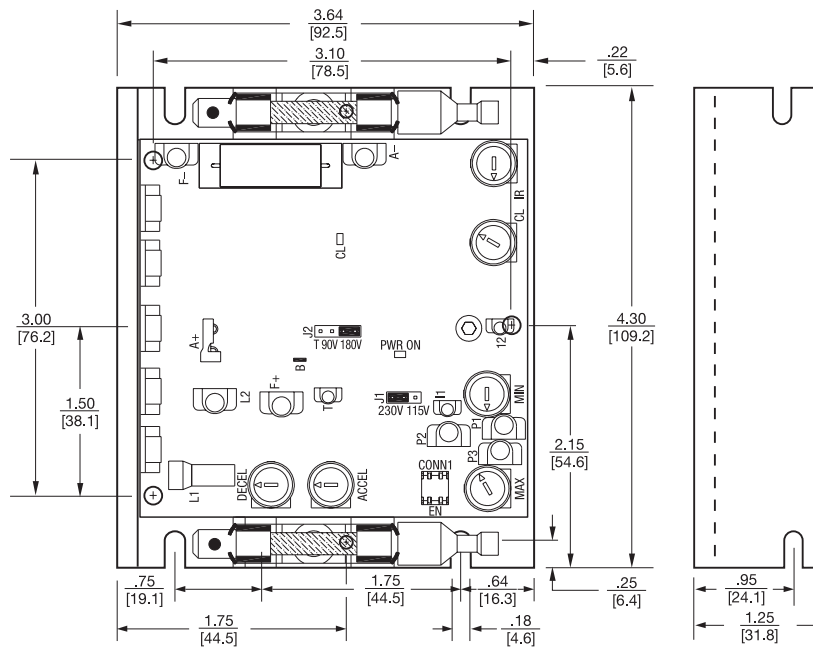


### BC140, BC140-FBR

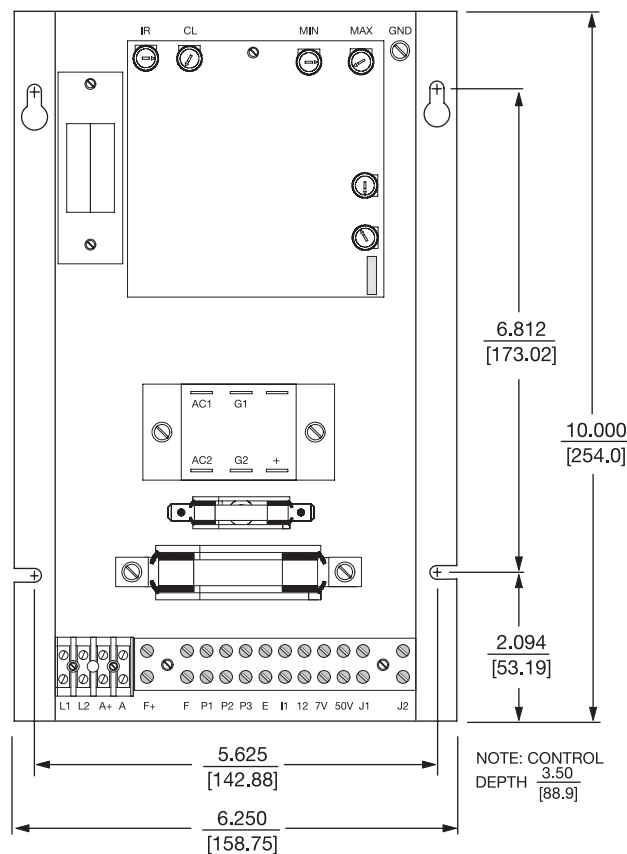


## Dimension Diagrams

### BC141, BC142, BC142-6



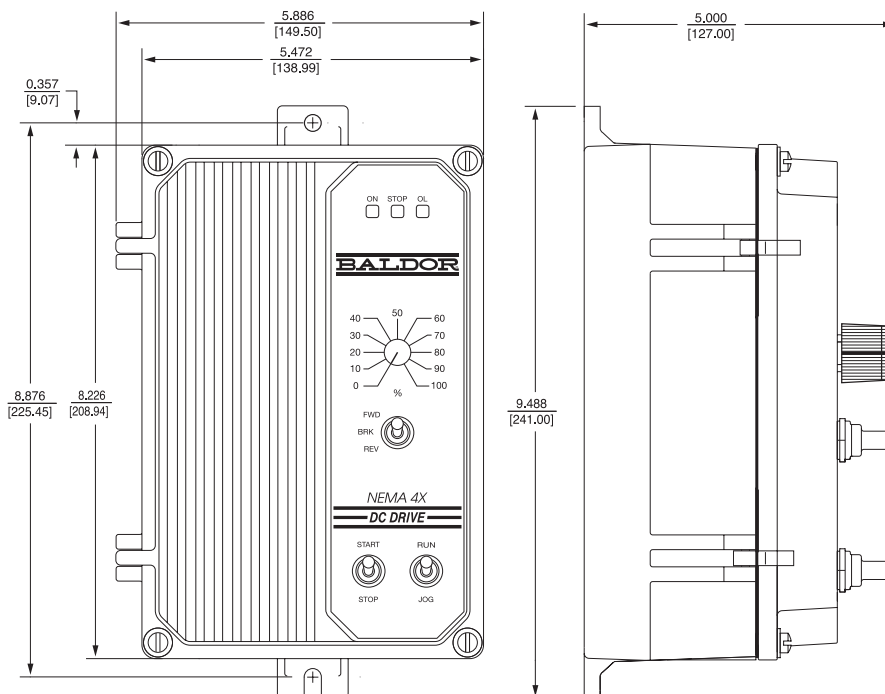
### BC155



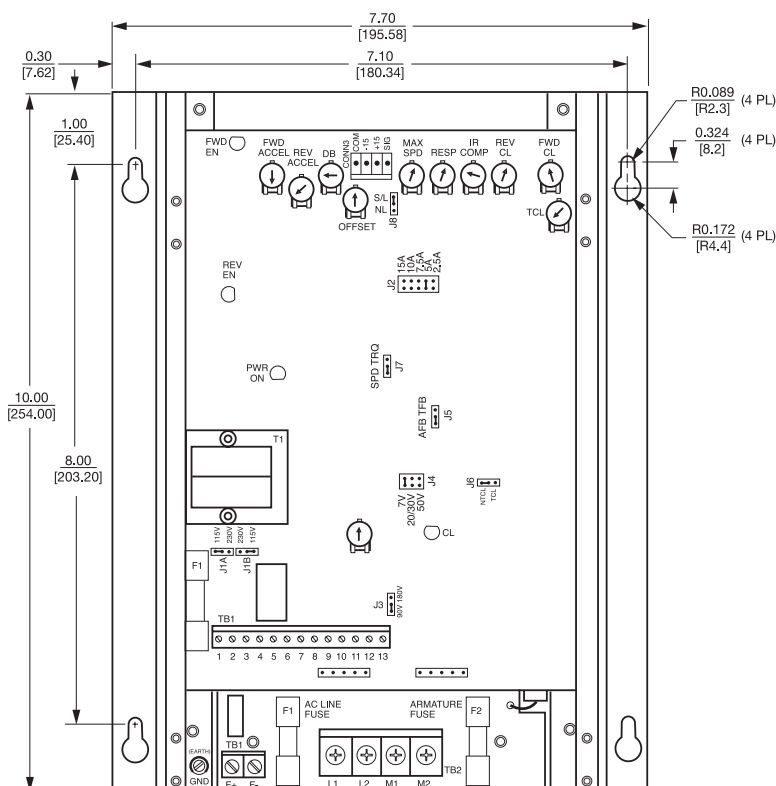


## Dimension Diagrams

### BC154, BCWD140, BC160, BC254 and BC254

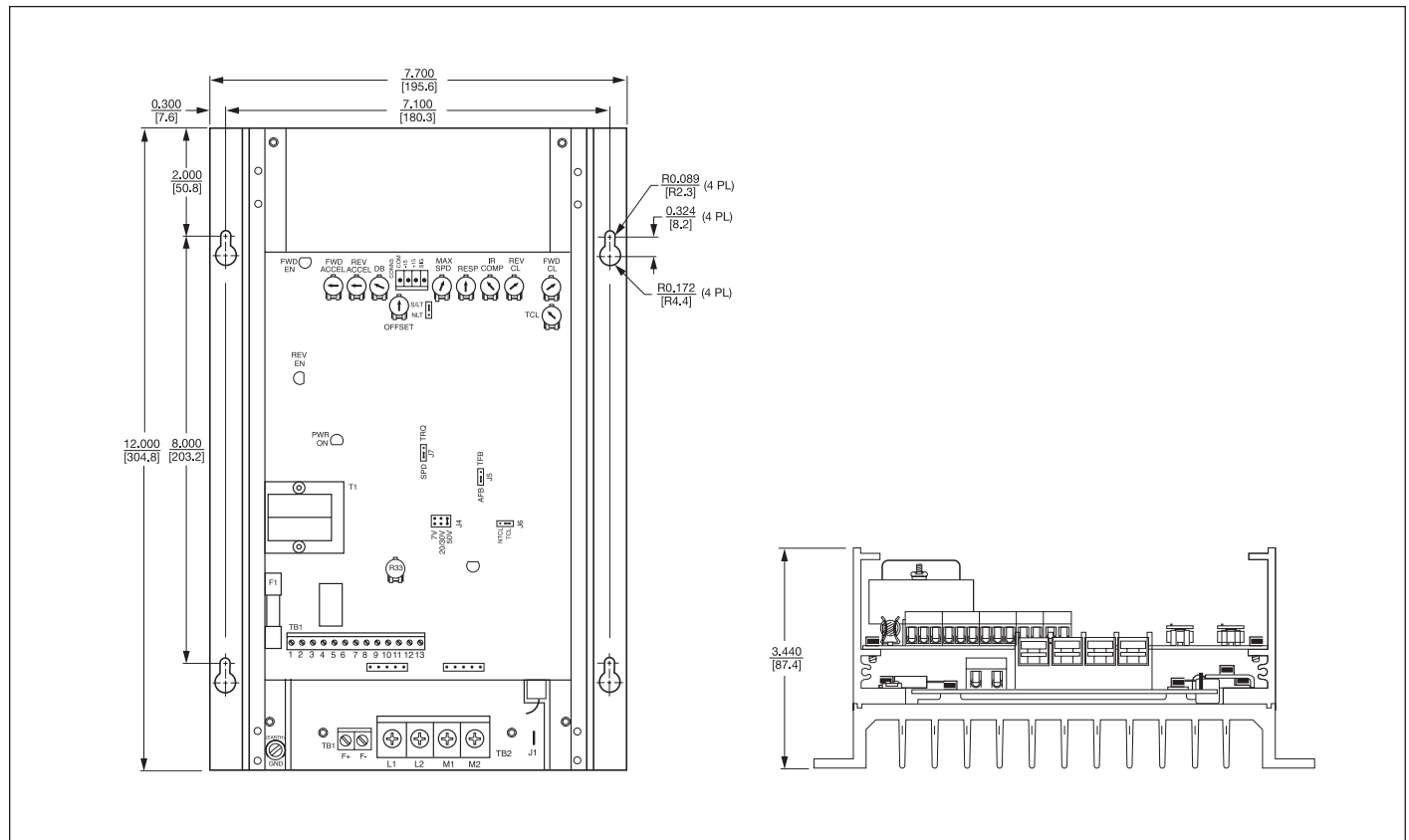


### BC200, BC201

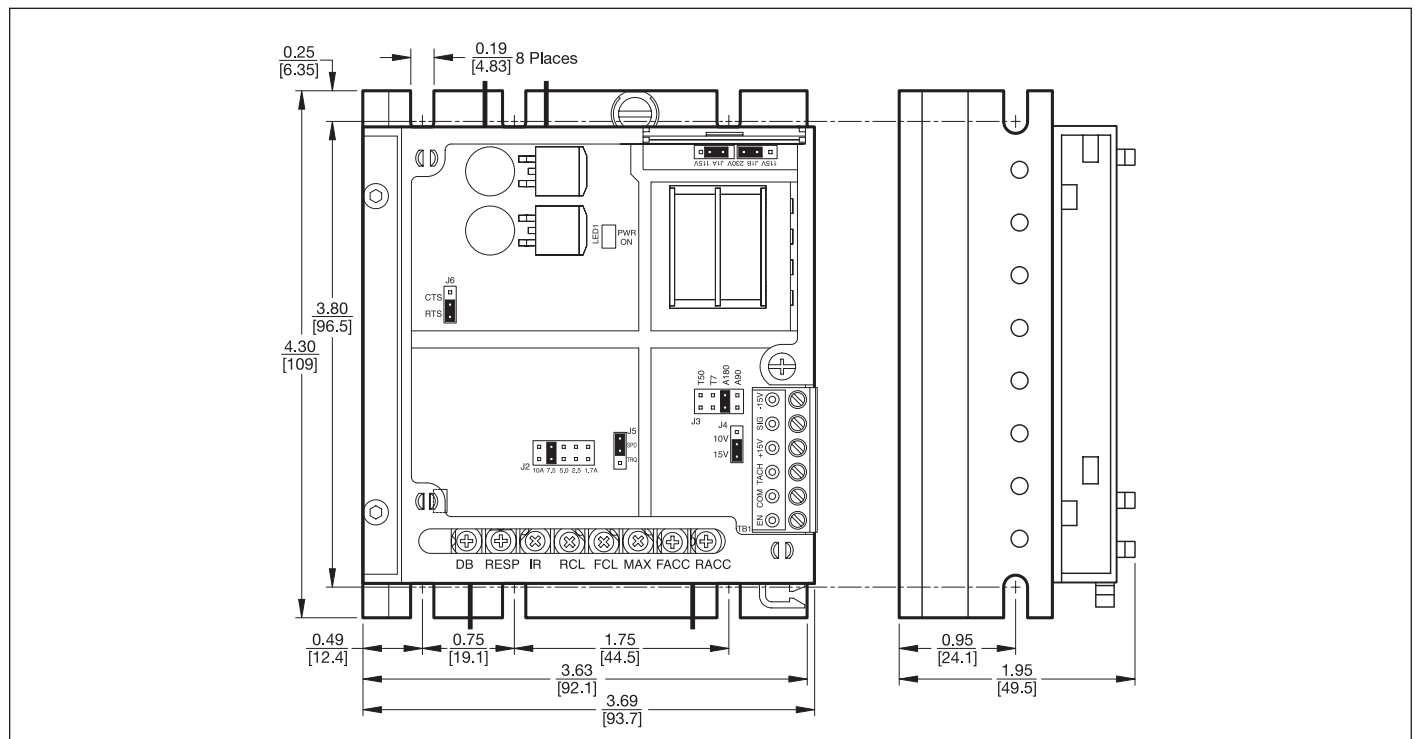


## Dimension Diagrams

### BC203



### BC204





## Contact your nearest Baldor-Dodge-Reliance District Office at these World Wide locations, or visit [www.baldor.com](http://www.baldor.com)

### UNITED STATES

#### ARIZONA

##### PHOENIX

4211 S 43RD PLACE  
PHOENIX, AZ 85040  
PHONE: 602-470-0407  
FAX: 602-470-0464

#### ARKANSAS

##### CLARKSVILLE

1001 COLLEGE AVE.  
CLARKSVILLE, AR 72830  
PHONE: 479-754-9108  
FAX: 479-754-9205

#### CALIFORNIA

##### LOS ANGELES

6480 FLOTTILLA  
COMMERCE, CA 90040  
PHONE: 323-724-6771  
FAX: 323-721-5859

##### HAYWARD

21036 FORBES STREET  
HAYWARD, CA 94545  
PHONE: 510-785-9900  
FAX: 510-785-9910

#### COLORADO

##### DENVER

25201 W BARBERRY PLACE  
DENVER, CO 80204  
PHONE: 303-693-0127  
FAX: 303-595-3772

9980 PARK MEADOWS DRIVE  
SUITE 214  
LONE TREE, CO 80124-6739  
PHONE: 303-339-9629  
FAX: 303-339-9633

#### CONNECTICUT

##### WALLINGFORD

65 SOUTH TURNPIKE ROAD  
WALLINGFORD, CT 06492  
PHONE: 203-269-1354  
FAX: 203-269-5485

#### FLORIDA

##### TAMPA/PUERTO RICO/ VIRGIN ISLANDS

3906 EAST 11TH AVENUE  
TAMPA, FL 33605  
PHONE: 813-248-5078  
FAX: 813-247-2984

#### GEORGIA

##### ATLANTA

62 TECHNOLOGY DR.  
ALPHARETTA, GA 30005  
PHONE: 770-772-7000  
FAX: 770-772-7200

5490 MCGINNIS FERRY PLACE  
SUITE 133  
ALPHARETTA, GA 30005  
PHONE: 770-752-4254  
FAX: 770-752-4257

#### ILLINOIS

##### CHICAGO

1601 FRONTENAC ROAD  
NAPERVILLE, IL 60563  
PHONE: 630-848-5100  
FAX: 630-848-5110

#### INDIANA

##### COLUMBUS

3300 TENTH ST  
COLUMBUS, IN 47201  
PHONE: 812-378-2556  
FAX: 812-378-2555

##### INDIANAPOLIS

5525 W MINNESOTA STREET  
INDIANAPOLIS, IN 46241  
PHONE: 317-246-5100  
FAX: 317-246-5110

#### IOWA

##### DES MOINES

1800 DIXON STREET, SUITE C  
DES MOINES, IA 50316  
PHONE: 515-263-6929  
FAX: 515-263-6515

#### KANSAS

5030 BOB BILLINGS PKWY STE B  
LAWRENCE, KS 66049  
PHONE: 785-749-4339  
FAX: 785-749-4217

#### MARYLAND

##### BALTIMORE

6680 SANTA BARBARA RD.  
SUITE 22-24  
WORCESTER, MD 21075  
PHONE: 410-579-2135  
FAX: 410-579-2677

#### MASSACHUSETTS

##### BOSTON

6 PULLMAN STREET  
WORCESTER, MA 01606  
PHONE: 508-854-0708  
FAX: 508-854-0291

#### MICHIGAN

##### DETROIT

33782 STERLING PONDS BLVD.  
STERLING HEIGHTS, MI 48312  
PHONE: 586-978-9800  
FAX: 586-978-9969

##### GRAND RAPIDS

668 THREE MILE ROAD NW  
GRAND RAPIDS, MI 49504  
PHONE: 616-785-1784  
FAX: 616-785-1788

#### MINNESOTA

##### MINNEAPOLIS

21080 134TH AVE. NORTH  
ROGERS, MN 55374  
PHONE: 763-428-3633  
FAX: 763-428-4551

#### MISSOURI

##### ST LOUIS

422 INDUSTRIAL DRIVE  
MARYLAND HEIGHTS, MO 63043  
PHONE: 314-298-1800  
FAX: 314-298-7660

##### KANSAS CITY

1501 BEDFORD AVENUE  
NORTH KANSAS CITY, MO 64116  
PHONE: 816-587-0272  
FAX: 816-587-3735

#### NEW YORK

##### AUBURN

ONE ELLIS DRIVE  
ALBURN, NY 13021  
PHONE: 315-255-3403  
FAX: 315-253-9923

#### NORTH CAROLINA

##### GREENSBORO

1220 ROTHERWOOD ROAD  
GREENSBORO, NC 27406  
P O BOX 16500  
GREENSBORO, NC 27416  
PHONE: 336-272-6104  
FAX: 336-273-6628

#### OHIO

##### CINCINNATI

2929 CRESCENTVILLE ROAD  
WEST CHESTER, OH 45069  
PHONE: 513-771-2600  
FAX: 513-772-2219

##### CLEVELAND

9329 FREEMAN DRIVE  
Macedonia, OH 44056  
PHONE: 330-468-4777  
FAX: 330-468-5110

#### CLEVELAND (CONT)

29525 CHAGRIN BLVD SUITE 208  
CLEVELAND, OH 44122  
PHONE: 216-360-8296  
FAX: 216-360-4172

#### OKLAHOMA

##### TULSA

2 EAST DAWES  
BIXBY, OK 74008  
PHONE: 918-366-9320  
FAX: 918-366-9338

#### OREGON

##### PORTLAND

20393 SW AVERY COURT  
SUITE 170  
EUGENE, OR 97402  
PHONE: 503-691-9010  
FAX: 503-691-9012

#### PENNSYLVANIA

##### DOWNTOWN

264 SPRING RUN LANE  
DOWNTOWN, PA 19335  
PHONE: 215-798-6482  
FAX: 215-672-5759

#### PHILADELPHIA

1035 THOMAS BUSCH  
MEMORIAL HIGHWAY  
PENNSAUKEN, NJ 08110  
PHONE: 856-661-1442  
FAX: 856-663-6363

##### PITTSBURGH

159 PROMINENCE DRIVE  
NEW KENSINGTON, PA 15068  
PHONE: 724-889-0092  
FAX: 724-889-0094

#### TENNESSEE

##### MEMPHIS

4000 WINCHESTER ROAD  
MEMPHIS, TN 38118  
PHONE: 901-365-2020  
FAX: 901-365-3914

#### TEXAS

##### CARROLLTON

1520 LUNA ROAD STE 120  
CARROLLTON, TX 75006  
PHONE: 972-466-3955  
FAX: 972-242-1505

##### HOUSTON

4647 PINE TIMBERS  
SUITE # 135  
HOUSTON, TX 77041  
PHONE: 713-895-7062  
FAX: 713-890-4540

##### DALLAS

3040 QUEBEC  
DALLAS, TX 75247  
PHONE: 214-634-7271  
FAX: 214-634-9874

#### UTAH

##### SALT LAKE CITY

2230 SOUTH MAIN STREET  
SALT LAKE CITY, UT 84115  
PHONE: 801-832-0127  
FAX: 801-832-8911

#### VIRGINIA

##### RICHMOND

6767 FOREST HILL AVE STE 305  
RICHMOND, VA 23225  
PHONE: 804-545-6848  
FAX: 804-545-6840

#### WASHINGTON

##### KIRKLAND, WA

550 KIRKLAND WAY STE 205  
KIRKLAND, WA 98033  
PHONE: 425-952-5100  
FAX: 775-255-8019

#### WISCONSIN

##### MILWAUKEE

2725 SOUTH 163RD STREET  
NEW BERLIN, WI 53151  
PHONE: 262-784-5940  
FAX: 262-784-1215

##### WAUKESHA

N14 W23777 STONE RIDGE DRIVE  
SUITE 170  
WAUKESHA, WI 53188  
PHONE: 262-347-2000  
FAX: 262-437-0258

#### INTERNATIONAL SALES

##### FORT SMITH, AR

P.O. BOX 2400  
FORT SMITH, AR 72902  
PHONE: 479-646-4711  
FAX: 479-648-5895

#### CANADA

##### EDMONTON, ALBERTA

4053-92 STREET  
EDMONTON, ALBERTA T6E 6R8  
PHONE: 780-438-2600  
FAX: 780-438-2600

##### MISSISSAUGA, ONTARIO

11428-168 STREET  
EDMONTON, ALBERTA T5M 3T9  
PHONE: 780-822-7865  
FAX: 780-822-7878

##### MISSISSAUGA, ONTARIO

244 BRITANNIA ROAD EAST  
MISSISSAUGA, ONTARIO L4Z 1S6  
PHONE: 905-890-5110  
FAX: 905-890-5540

##### OKVILLE, ONTARIO

2750 COVENTRY ROAD  
OKVILLE, ONTARIO L6H 6R1  
PHONE: 905-829-3301  
FAX: 905-829-3302

##### DORVAL, QUEBEC

95 RUE LINDSAY  
DORVAL, QUEBEC H9P 2S6  
PHONE: 514-422-8818  
FAX: 514-422-8982

##### MONTREAL, QUEBEC

1844 WILLIAM STREET  
MONTREAL, QUEBEC H3J 1R5  
PHONE: 514-933-2711  
FAX: 514-933-8639

##### VANCOUVER, BRITISH COLUMBIA

1538 KEBET WAY  
PORT COQUITLAM,  
BRITISH COLUMBIA V3C 5M5  
PHONE: 604-421-2822  
FAX: 604-421-3113

##### WINNIPEG, MANITOBA

54 PRINCESS STREET  
WINNIPEG, MANITOBA R3B 1K2  
PHONE: 204-942-5205  
FAX: 204-956-4251

#### AUSTRALIA

UNIT 3, 6 STANTON ROAD  
SEVEN HILLS, NSW 2147, AUSTRALIA  
PHONE: (61) (2) 9674 5455  
FAX: (61) (2) 9674 2495

UNIT 8, 5 KELLETTS ROAD  
ROWVILLE, VICTORIA, 3178 AUSTRALIA  
PHONE: (61) (3) 9753 4355  
FAX: (61) (3) 9753 4366

##### AMÉRICA DEL SUR

APTDO. 0818-00440  
CIUDAD DE PANAMÁ, PANAMÁ  
PHONE: +507 261-5347  
FAX: +507 261-5355

#### CENTRO AMÉRICA Y CARIBE

RESIDENCIAL PINARES DE SUIZA  
POL. 15 #44  
NVA. SAN SALVADOR, EL SALVADOR  
PHONE: +503 2288-1519  
FAX: +503 2288-1518

#### CHILE

SOUTHERN CONE & BRAZIL, CENTRAL  
AMERICA & CARIBBEAN  
LUIS THAYER CUEDA 166,  
PISO 6 - PROVIDENCIA  
SANTIAGO, CHILE  
PHONE: 56-2-290-0714  
(SOUTHERN CONE & BRAZIL)  
56-2-290-0713(CA & CARIBBEAN)  
FAX: 56-2-290-0707

#### CHINA

ROOM NO. A-8421  
JIAHUA BUSINESS CENTER  
808 HONG QIAO ROAD  
SHANGHAI 200030, CHINA  
PHONE: (86-21) 6447 3060  
FAX: (86-21) 6407 8620

4/F, OFFICE TOWER 1, HENDERSON CTR  
18 JIANGUOMENNEI AVENUE  
DONGCHENG DISTRICT  
BEIJING 100005 CHINA  
PHONE: 86 10 6518 2535  
FAX: 86 10 6518 2573

#### GERMANY

DIESELSTRASSE 22  
D-85551 KIRCHHEIM  
MUNICH, GERMANY  
PHONE: +49 89 90 5080  
FAX: +49 89 90 50 8492

HERMANN-HEINRICH-GOSSEN-STRASSE 3  
D-50858 KÖLN, GERMANY  
PHONE: 49 2234 37941 0  
FAX: 49 2234 37941 64

#### INDIA

14, COMMERCE AVENUE  
MAHAGANESH COLONY  
RAUD ROAD  
PUNE - 411 038  
MAHARASHTRA, INDIA  
PHONE: 91 20 25 45 95 31  
FAX: 91 20 25 45 95 30

13-D, HANSALAYA 15,  
15, BARAKHAMBHA ROAD  
NEW DELHI 110001 INDIA  
PHONE: 91-11-2335-2167  
FAX: 91-11-2335-2170

#### ITALY

BALDOR ASR AG  
SUCCURSALE DI MENDRISIO  
VIA BORROMINI, 20A  
CH-6850 MENDRISIO  
SWITZERLAND  
PHONE: 0041 91 640 99 50  
FAX: 0041 91 630 26 33

#### JAPAN

DIA BLDG 802,  
2-21-1 TSURUYA-CHO,  
KANAGAWA-KU  
YOKOHAMA, 221-0835, JAPAN  
PHONE: 81-45-412-4506  
FAX: 81-45-412-4507

#### KOREA

ROOM 208-37  
INCHEON INDUSTRIAL GOODS  
CIRCULATING CENTER  
SONGHEON 3-DONG, DONG-GU  
INCHEON, KOREA, 401-705  
PHONE: (82) 32 588 3253  
FAX: (82) 32 588 3254

#### MÉXICO

##### GUANAJUATO

KM. 2.0 BLVD. AEROPUERTO  
LEÓN 37545, GUANAJUATO, MÉXICO  
PHONE: 52 477 761 2030  
FAX: 52 477 761 2010

##### JALISCO

DODGE DE MEXICO S.A. DE C.V.  
CALLE A #170  
PARQUE INDUSTRIAL EL SALTO  
EL SALTO, JALISCO 45680 MEXICO  
PHONE: 52-33-3284-1622  
FAX: 52-33-3285-1618

##### MEXICO CITY

CARRETERA VILLA NICOLÁS ROMERO #25,  
PEDREGAL DE ATIZAPÁN  
ATIZAPÁN DE ZARAGOZA,  
EDO. DE MEXICO 52947 MEXICO  
PHONE: 52-55-5824-9470  
FAX: 52-55-5822-9744

##### MONTERREY

TORRE DATAFLUX, OFICINAS 1026 Y 1030  
BATALLÓN DE SAN PATRICIO #109  
COL. VALLE ORIENTE  
SAN PEDRO GARZA GARCÍA,  
N.L. 66260 MEXICO  
PHONE: 52-81-8625-6532  
FAX: 52-81-8625-6699

#### MIDDLE EAST & NORTH AFRICA

VSE INTERNATIONAL CORP.  
P. O. BOX 5618  
BUFFALO GROVE, IL 60089-5618  
PHONE: 847 590 5547  
FAX: 847 590 5587

#### SINGAPORE

51 KAKI BUKIT ROAD 2  
K B WAREHOUSE COMPLEX  
SINGAPORE 417863  
PHONE: (65) 6744 2572  
FAX: (65) 6747 1708

#### SWITZERLAND

FOSTFACH 73  
SCHUTZENSTRASSE 59  
CH-8245 FEUERTEHALEN  
SWITZERLAND  
PHONE: +41 52 647 4700  
FAX: +41 52 659 2394

#### TAIWAN

1F, NO 126 WENSHAN 3RD STREET,  
NANTUN DISTRICT,  
TAICHUNG CITY 408  
TAIWAN R.O.C  
PHONE: (886) 4 238 04235  
FAX: (886) 4 238 04463

#### UNITED KINGDOM

6 BRISTOL DISTRIBUTION PARK  
HAWKLEY DRIVE  
BRISTOL BS32 0BF U.K.  
PHONE: +44 1454 850000  
FAX: +44 1454 859001

#### VENEZUELA

NORTH ANDEAN  
AV. GONZALES RINCONES.  
EDF. ALLEN BRADLEY  
ZONA INDUSTRIAL LA TRINIDAD,  
CARACAS, VENEZUELA  
PHONE: 58 212 949 0611  
FAX: 58 212 943 3955

