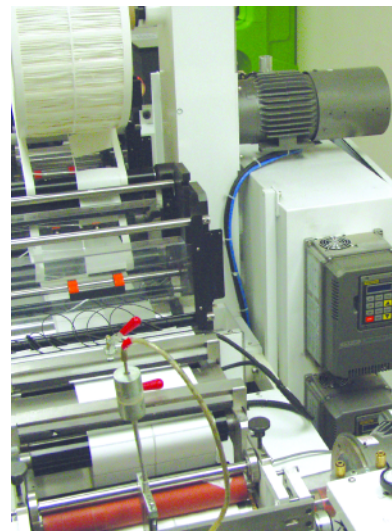


Baldor Series 15H and 18H Inverter and Vector Drives



BALDOR®
MOTORS • DRIVES • GENERATORS

The Baldor Keypad

The Baldor keypad allows the operator to enjoy the flexibility expected in today's controls and the ease of operation you have always hoped to have. Baldor includes twelve keys on the keypad and the keys depress so you "feel" that you have pushed them. We also include a 32 character English "alpha-numeric" display. You don't have to be a detective to know what you are doing - the display helps you whether you are operating, programming or monitoring. Keypads supplied on NEMA 1 and NEMA 4 controls carry a NEMA 4X rating when remote mounted. The real advantage in this keypad is that it's easy to operate and is used on a variety of Baldor controls.



FWD MOTOR SPEED
LOCAL 1750 RPM

COMMAND SELECT
P: POTENTIOMETER

ENTER

PRESS ENTER FOR
PRESET SPEEDS

PRESS ENTER FOR
INPUT

PRESS ENTER FOR
OUTPUT

JOG

FWD

Removable Keypad

The Baldor keypad is designed to be removed from the main control and mounted up to 100 feet away. This will allow the control to be mounted in a convenient location, and the keypad near the operator for ease of use.

English Display

The keypad displays both the operating conditions and the programming steps in easy to follow English. This eliminates the need to look up parameter numbers, program the wrong setting and all the other "easy" mistakes when working with codes.

Single Function

Each key has one function. There is not a whole set of "second operations" that each key can perform confusing the operator.

Block Programming

It is easy to adjust the control. Most controls force the operator to scroll through every parameter to get to the one desired. With block programming, the adjustments are in blocks of like adjustments. For example, if you wanted to adjust a preset speed, you would find the block that says: Press ENTER for preset speeds. If you didn't want a preset speed your arrow keys take you to the next block of adjustments.

Input Terminals

The terminal connections allow control of the drive from a potentiometer (power provided), a set point controller (PID) through analog input or a PLC (or switch closures) for discrete preset speeds.

Output Terminals

The control provides two programmable analog (0 - 5VDC) outputs. These outputs can be used to run meters or as an input to other controls for "leader/follower" applications. The control can provide optically isolated discrete outputs along with Form C relay outputs. The opto's are powered by a 5 - 30VDC power supply, and the relays are capable of switching up to 230VAC. The outputs are programmable for settings such as Ready, At Speed, Zero Speed, Reverse, Fault, etc.

LED'S On Action Keys

There is one LED on each of the following: JOG, FWD, REV and STOP. These LED's are "ON" whenever the COMMAND is active. When you command FORWARD - the LED in the FWD key comes on (STOP and REV are off). These LED'S are still active when you are controlling from the terminal strip, plc, switch closures, etc. The active LED lets the operator know the command has been received and accepted (no broken wires or dirty contacts).

Series 15H and 18H Applications



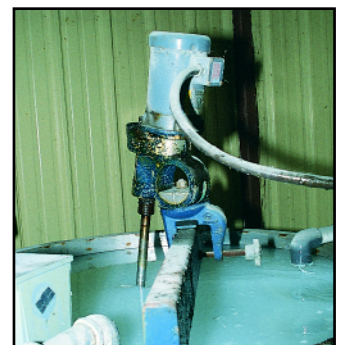
Centrifugal Fan – The Baldor inverter is used to adjust the CFM (and associated pressure) of a fan. Typically, in the past, inlet vanes and outlet dampers have controlled air flow. These techniques are effective and well accepted, but not very energy efficient. With the Baldor inverter – vanes, dampers, actuators and their associated maintenance may be eliminated. Additionally and most importantly, power consumption is decreased by the cube of the speed decrease. This means a potential for tremendous energy savings. Simple control of speed through the process follower input allows “closed loop” control of your air flow. We have also included 3 skip frequencies to avoid those “critical speed bands” that might cause excessive vibration.

Conveyor – Baldor’s 15H or 18H are the perfect solution to control the speed of a conveyor. Motor drives are used to reduce setup for different products run on one conveyor, various processes, different shifts, etc. Control of speed can be with a potentiometer, a process follower or simple switch closures (with up to 15 preset speeds)! Built into the control is dynamic braking to allow the operator to “ramp down” the conveyor speed instead of just coasting down. Also, the 18H control will allow full torque down to and including zero speed for precise start and stops. We have also included an “s-curve” for an easy start and landing during acceleration and deceleration. A great help to keep productivity up, and reduce scrap.



Pump – In Baldor’s tradition of being a value supplier of energy efficient motors – Baldor’s inverter includes several different “square reduced” volts/hertz curves. This allows the drive to operate close to the pumps output requirements - an absolute energy saver for variable flow applications. With the Baldor inverter, throttling valves can be eliminated and flow controlled from adjustable motor speed. With the adjustable acceleration time (up to 3600 seconds), water hammer can be significantly reduced if not entirely eliminated. The mechanical stresses in your pump and motor will also be greatly reduced. Additionally, inrush current associated with across-the-line starts can be dramatically reduced. Once again, simple control through the keypad, potentiometer, or process follower (0 - 10VDC, 0 - 5VDC or 4-20 mA) input is available.

Mixer – Baldor’s Series 15H inverter and 18H vector drive includes many features that make it ideal for mixing applications. We include the ability to control speeds through a process follower, the keypad or switch closures for various speeds. Included is a minimum speed so the operator cannot turn the speed down below a set value, to keep the mixture from “setting up”. Adjustable current limit will trip off the drive at a set torque (related to viscosity) level. High speeds for very fluid materials (up to 7200 rpm or more) are possible! You can even read current on the keypad and use it as a determination of viscosity.



Packaging Equipment – (Typically constant torque applications) – Baldor’s Series 15H inverter provides wide constant torque speed ranges with its superior torque boost and the potential for changing base speed beyond 60 hertz for applied motors. The series 18H vector drive provides superior closed loop motor control for applications requiring tight speed and torque regulation. The process following feature allows a master controller to control the entire process. The analog output can be tied into the analog input of another control for leader/follower applications or use the plug in pulse follower expansion board for full digital control.

Series 15H Inverter Drive

Design Specifications

- Microprocessor controlled PWM output
- Output frequency 0.25-120Hz, optional 0.25-400Hz
- Peak overload capacity of 200%
- Process follower 0-5VDC, 0-10VDC, 4-20mA
- Free run or ramp stop
- Controlled reversing
- Selectable preset speeds
- Jog speed
- Dynamic braking
- DC Injection braking
- Separate accel/decel rates
- PID-Setpoint control
- Bus present and fault trip LED
- Fault trip output for customer use
- 2 Programmable analog meter outputs
- 2 Programmable Opto outputs
- 2 Programmable relay outputs
- NEMA 1 enclosure as standard (-E, -EO) 1-800 hp
- NEMA 4X enclosure as standard(-W) 1-15 hp
- PID setpoint control
- UL/cUL Listed

Environmental and Operating Conditions

- Input voltage - 1 or 3 phase 200-240 VAC \pm 10%, 3 phase 380-480 VAC \pm 10%, 3 phase 550-600 VAC \pm 10%
- Input frequency - 50 or 60Hz \pm 5%
- Service factor - 1.0
- Duty - continuous
- Humidity - 90% max RH non-condensing
- Altitude - 3300 feet max without derate

Operator Keypad

- Digital speed control
- Forward command
- Reverse command
- Stop command
- Jog speed
- Display 32 character alpha-numeric
- Local/Remote key
- Remote mount to 100 feet
- Membrane keys with tactile feel
- NEMA 4X enclosure when panel mounted

Protective Features

- Selectable automatic restart at momentary power loss with free setting of maximum number of trips and time between trip and reset
- Programmable security lockout
- DC bus charge indicator
- Adjustable time-base overload
- Cause of last 31 trips retained in memory
- Linear heat sink thermal sensor
- Digital display for fault conditions including:
 - Overtemperature
 - Over voltage
 - Under voltage
 - Over current
 - Ground fault
 - Drive overload
 - Heatsink thermal
 - External trip

Output Ratings	Overload Capacity	150% for 60 seconds, 170-200% for 3 seconds constant torque				
	Frequency	0-400Hz				
	Voltage	0-Maximum Input Voltage (RMS)				
Input Ratings	Frequency	50 Hz		60 Hz		
	Voltage	180-230 VAC	340-457 VAC	180-264 VAC	340-528 VAC	495-660 VAC
	Phase	Three Phase or Single Phase with derate				
Control Spec	Impedance	1% minimum for required for sizes C2, F, G, G2; 3% minimum for sizes A, B, D and E				
	Method	Sinewave Carrier Input, PWM Output				
	Speed Setting	\pm 5vdc, 0-5vdc, \pm 10vdc, 0-10vdc, 4-20mA, Digital via Keypad, RS-232, RS-485, DeviceNet, Modbus Plus, Profibus				
	Accel/Decel	0-3600 Seconds linear or S-curve to maximum speed				
	Dynamic Braking	20% Min on E,W models, EO models require optional external assemblies				
LCD Display	Setup	Parameter values for setup and review				
	Running	Motor RPM, output current, output voltage, local remote control, Fwd/Rev				
	Faults	Separate message for each trip, last 31 retained in memory				
	Diagnostics	Review of setup and operating parameters				
Ambient Conditions	Temperature	0-40 Deg C for UL listing				
	Cooling	Forced air included when required				
	Altitude	0-3300 feet without derate				
	Humidity	0-90% Max RH non-condensing for NEMA 1; 100% condensing for NEMA 4				

Series 15H Inverter Drive Output Ratings

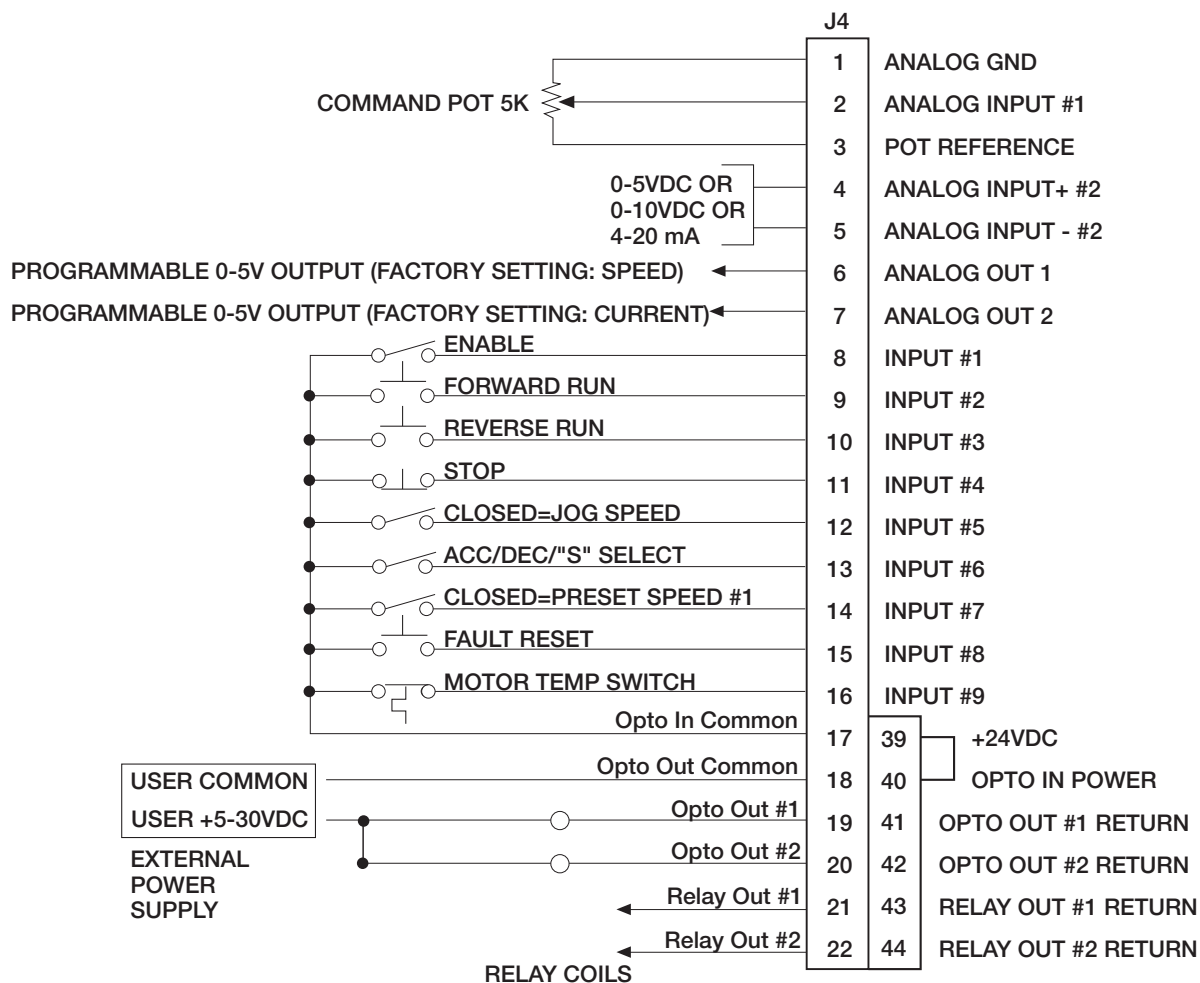
With Quad Rating each control can be setup to operate in one of four distinct output operating zones. The zones are defined by the PWM frequency, continuous output current, and peak output current. By selecting the desired Operating Zone the control will automatically set the PWM frequency, continuous current, and peak current to the proper values for the desired operating zone.

Catalog Number	Input Volt	Size	Standard 2.5 kHz PWM								Quiet 8.0 kHz PWM							
			Constant Torque				Variable Torque				Constant Torque				Variable Torque			
			HP	kW	IC	IP	HP	kW	IC	IP	HP	KW	IC	IP	HP	kW	IC	IP
ID15H201-E	230	A	1	0.75	4.2	8.4	2	1.5	7	8.1	0.75	0.56	3.2	6.4	1	0.75	4.2	4.9
ID15H202-E	230	A	2	1.5	7.0	14	3	2.2	10	12	1	0.75	4.2	8.4	2	1.5	7.0	8.1
ID15H203-E	230	A	3	2.2	10	20	5	3.7	16	19	2	1.5	7.0	14	3	2.2	10	12
ID15H205-E	230	A	5	3.7	16	32	7.5	5.5	22	25	3	2.2	10	20	5	3.7	16	19
ID15H207-E	230	B	7.5	5.5	22	38	10	7.4	28	32	5	3.7	16	32	7.5	5.5	22	25
ID15H210-E	230	B	10	7.4	28	50	15	11.1	42	48	7.5	5.5	22	44	10	7.4	28	32
ID15H215-E	230	B	15	11.1	42	71	15	11.1	42	48	10	7.4	28	48	15	11.1	42	48
ID15H220-EO	230	C2	20	14.9	55	110	25	18.6	68	78	15	11.1	42	92	20	14.9	54	62
ID15H225-EO	230	C2	25	18.6	68	116	30	22.3	80	92	20	14.9	54	92	25	18.6	68	78
ID15H230-EO	230	C2	30	22.3	80	136	30	22.4	80	92	25	18.6	70	122	25	18.6	68	78
ID15H240-MO	230	D	40	29.8	105	200	50	37.2	130	150	30	22.3	80	160	40	29.8	104	120
ID15H250-MO	230	D	50	37.2	130	225	50	37.2	130	150	40	29.8	105	183	50	37.2	130	150
ID15H401-E	460	A	1	0.75	2.1	4.2	2	1.5	4.0	5.0	0.75	0.56	1.6	3.2	1	0.75	2.1	2.5
ID15H402-E	460	A	2	1.5	4.0	8.0	3	2.2	5.0	6.0	1	0.75	2.1	4.2	2	1.5	4.0	5.0
ID15H403-E	460	A	3	2.2	5.0	10	5	3.7	8.0	10	2	1.5	4.0	8.0	3	2.2	5.0	6.0
ID15H405-E	460	A	5	3.7	8.0	16	7.5	5.5	11	13	3	2.2	5.0	10	5	3.7	8.0	10
ID15H407-E	460	A	7.5	5.5	11	19	10	7.4	14	17	5	3.7	8.0	16	7.5	5.5	11	13
ID15H410-E	460	B	10	7.4	14	28	15	11.1	21	25	7.5	5.5	11	22	10	7.4	14	17
ID15H415-E	460	B	15	11.1	21	36	20	14.9	27	31	10	7.4	15	30	15	11.1	21	25
ID15H420-EO	460	C2	20	14.9	27	50	25	18.6	34	39	15	11.1	21	46	20	14.9	27	31
ID15H425-EO	460	C2	25	18.6	34	58	30	22.3	40	46	20	14.9	27	46	25	18.6	34	39
ID15H430-EO	460	C2	30	22.3	40	68	40	29.8	52	60	25	18.6	35	61	30	22.3	40	46
ID15H440-EO	460	C2	40	29.8	55	94	50	37.2	65	75	30	22.3	40	68	40	29.8	52	60
ID15H450-EO	460	D	50	37.2	65	115	60	44.8	80	92	40	29.8	55	92	50	37.2	65	75
ID15H460-EO	460	D	60	44.7	80	140	75	56	100	115	50	37.2	65	122	60	44.7	80	92
ID15H475-EO	460	E	75	56	100	200	100	75	125	144	60	44.7	80	160	75	56	100	115
ID15H4100-EO	460	E	100	75	125	220	125	93	160	184	75	56	100	183	100	75	125	144
ID15H4150V-EO	460	E	150	112	180	269	150	112	180	207	100	75	125	240	125	93	160	184
ID15H4150-EO	460	F	150	112	190	380	200	149	240	276	125	93	150	260	150	112	170	200
ID15H4200-EO	460	F	200	149	250	500	250	186.5	310	360	150	112	190	380	175	131	210	240
ID15H4250-EO	460	F	250	187	310	620	300	224	370	430	200	149	250	500	250	187	310	360
ID15H4300-EO	460	G2	300	224	370	630	350	261	420	490	-	-	-	-	-	-	-	-
ID15H4350-EO	460	G2	350	261	420	720	400	298	480	560	-	-	-	-	-	-	-	-
ID15H4400-EO	460	G2	400	298	480	820	450	336	540	620	-	-	-	-	-	-	-	-
ID15H4450-EO	460	G	450	336	540	855	500	373	590	680	-	-	-	-	-	-	-	-
ID15H4500-EO	460	G+	500	373	590	1180	600	447	710	820	-	-	-	-	-	-	-	-
ID15H4600-EO	460	G+	600	447	710	1210	700	522	830	960	-	-	-	-	-	-	-	-
ID15H4700-EO	460	G+	700	522	830	1500	800	597	950	1100	-	-	-	-	-	-	-	-
ID15H4800-EO	460	G+	800	597	950	1710	900	671	1070	1230	-	-	-	-	-	-	-	-
ID15H501-E	575	A	1	0.75	1.7	3.4	2.0	1.5	3.0	4.0	0.75	0.56	1.3	2.6	1	0.75	1.7	2.0
ID15H502-E	575	A	2	1.5	3.0	6.0	3	2.2	4.0	5.0	1	0.75	1.7	3.4	2	1.5	3.0	4.0
ID15H503-E	575	A	3	2.2	4.0	8.0	5	3.7	7.0	8.0	2	1.5	3.0	6.0	3	2.2	4.0	5.0
ID15H505-E	575	A	5	3.7	7.0	14	7.5	5.5	9.0	11	3	2.2	4.0	8.0	5	3.7	7.0	8.0
ID15H507-E	575	A	7.5	5.5	9.0	18	10	7.4	11	13	5	3.7	7.0	14	7.5	5.5	9	11
ID15H510-E	575	B	10	7.4	11	22	15	11.1	17	20	7.5	5.5	9	18	10	7.4	11	13
ID15H515-E	575	B	15	11.1	17	34	20	14.9	22	26	10	7.4	11	22	15	11.1	17	20
ID15H520-EO	575	C2	20	14.9	22	44	25	18.6	27	31	15	11.1	17	34	20	14.9	22	25
ID15H525-EO	575	C2	25	18.6	27	54	30	22.3	32	37	20	14.9	22	44	25	18.6	27	31
ID15H530-EO	575	C2	30	22.3	32	54	40	29.8	41	47	25	18.6	27	46	30	22.3	32	37
ID15H540-EO	575	C2	40	29.8	41	70	50	37.2	52	60	25	18.6	27	54	30	22.3	32	37
ID15H550-EO	575	D	50	37.2	52	92	60	44.7	62	71	40	29.8	41	73	50	37.2	52	60
ID15H560-EO	575	D	60	44.7	62	109	60	44.7	62	71	50	37.2	52	91	60	44.7	62	71
ID15H575-EO	575	E	75	56	77	155	100	75	100	115	-	-	-	-	-	-	-	-
ID15H5100-EO	575	E	100	75	100	200	125	93	125	145	-	-	-	-	-	-	-	-
ID15H5150V-EO	575	E	150	112	145	260	150	112	145	166	-	-	-	-	-	-	-	-
ID15H5150-EO	575	F	150	112	150	300	200	149	200	230	-	-	-	-	-	-	-	-
ID15H5200-EO	575	F	200	149	200	400	250	186	250	290	-	-	-	-	-	-	-	-
ID15H5300-EO	575	G	300	224	290	580	350	261	340	400	-	-	-	-	-	-	-	-
ID15H5350-EO	575	G	350	261	340	680	400	298	390	450	-	-	-	-	-	-	-	-
ID15H5400-EO	575	G	400	298	390	680	450	336	440	510	-	-	-	-	-	-	-	-

NOTE: -E is NEMA 1 enclosure w/built-in dynamic braking; -EO is NEMA 1 enclosure requires external braking kit.
-MO is protected chassis enclosure (not NEMA 1) and requires an external braking kit.

Typical Inverter Drive Remote Control Connections

Operation Mode: Standard run - 3 wire control



Series 15H Washdown Inverter Drive

Baldor 15H Washdown Inverter controls provide variable torque, constant torque and constant horsepower control in a NEMA 4X enclosure that can withstand frequent washdowns. These controls may be used in new installations, replacements or original equipment. They have an output frequency of 0.25 to 120 Hz, with a programming option up to 400 Hz. Peak overload capacity is 150% for sixty seconds. Features include a 32-character alphanumeric keypad for easy set-up and adjustment. Recommended for use with Baldor Washdown Inverter Drive® motors.



230 and 460 Volt

Catalog Number	Input Volt	Size	Standard 2.5 kHz PWM								Quiet 8.0 kHz PWM							
			Constant Torque				Variable Torque				Constant Torque				Variable Torque			
			HP	kW	IC	IP	HP	kW	IC	IP	HP	KW	IC	IP	HP	kW	IC	IP
ID15H201-W	230	A	1	0.75	4.2	8.4	2	1.5	7	8.1	0.75	0.56	3.2	6.4	1	0.75	4.2	4.9
ID15H202-W	230	A	2	1.5	7.0	14	3	2.2	10	12	1	0.75	4.2	8.4	2	1.5	7.0	8.1
ID15H203-W	230	A	3	2.2	10	20	5	3.7	16	19	2	1.5	7.0	14	3	2.2	10	12
ID15H205-W	230	A	5	3.7	16	32	7.5	5.5	22	25	3	2.2	10	20	5	3.7	16	19
ID15H207-W	230	B	7.5	5.5	22	38	10	7.4	28	32	5	3.7	16	32	7.5	5.5	22	25
ID15H210-W	230	B	10	7.4	28	50	15	11.1	42	48	7.5	5.5	22	44	10	7.4	28	32
ID15H215-W	230	B	15	11.1	42	71	15	11.1	42	48	10	7.4	28	48	15	11.1	42	48
ID15H401-W	460	A	1	0.75	2.1	4.2	2	1.5	4.0	5.0	0.75	0.56	1.6	3.2	1	0.75	2.1	2.5
ID15H402-W	460	A	2	1.5	4.0	8.0	3	2.2	5.0	6.0	1	0.75	2.1	4.2	2	1.5	4.0	5.0
ID15H403-W	460	A	3	2.2	5.0	10	5	3.7	8.0	10	2	1.5	4.0	8.0	3	2.2	5.0	6.0
ID15H405-W	460	A	5	3.7	8.0	16	7.5	5.5	11	13	3	2.2	5.0	10	5	3.7	8.0	10
ID15H407-W	460	A	7.5	5.5	11	19	10	7.4	14	17	5	3.7	8.0	16	7.5	5.5	11	13
ID15H410-W	460	B	10	7.4	14	28	15	11.1	21	25	7.5	5.5	11	22	10	7.4	14	17
ID15H415-W	460	B	15	11.1	21	36	20	14.9	27	31	10	7.4	15	30	15	11.1	21	25
ID15H501-W	575	A	1	0.75	1.7	3.4	2.0	1.5	3.0	4.0	0.75	0.56	1.3	2.6	1	0.75	1.7	2.0
ID15H502-W	575	A	2	1.5	3.0	6.0	3	2.2	4.0	5.0	1	0.75	1.7	3.4	2	1.5	3.0	4.0
ID15H503-W	575	A	3	2.2	4.0	8.0	5	3.7	7.0	8.0	2	1.5	3.0	6.0	3	2.2	4.0	5.0
ID15H505-W	575	A	5	3.7	7.0	14	7.5	5.5	9.0	11	3	2.2	4.0	8.0	5	3.7	7.0	8.0
ID15H507-W	575	A	7.5	5.5	9.0	18	10	7.4	11	13	5	3.7	7.0	14	7.5	5.5	9	11
ID15H510-W	575	B	10	7.4	11	22	15	11.1	17	20	7.5	5.5	9	18	10	7.4	11	13
ID15H515-W	575	B	15	11.1	17	34	20	14.9	22	26	10	7.4	11	22	15	11.1	17	20

NOTE: -W is NEMA 4X enclosure w/built-in dynamic braking

Series 15H Custom Capabilities

Baldor offers a wide variation of custom capabilities for the Series 15H Inverters including:

- Custom Enclosures are available to meet a wide variety of environmental conditions including NEMA 12, 3R and 4X.
- Engineered control Panels that include Input Disconnect, Output contactors, and Bypass Contactors.
- Custom panel designs are available for multiple controls or special operator controls.
- Line Regenerative capabilities using Series 21H Line Regen Inverter.
- High Power Inverters available through 1500 horsepower.

Series 18H Vector Drive

Desing Specifications

- Programmable carrier frequency to 16KHz
- Full rated torque down to zero speed
- Automatic tuning to motor with manual override
- Motor shaft orientation to encoder marker or switch closure
- Process follow: $\pm 10\text{vdc}$, $\pm 5\text{vdc}$, $0-5\text{vdc}$, $0-10\text{vdc}$, $4-20\text{mA}$, digital via keypad or optional RS-232, RS-485 serial communication
- Programmable linear or S curve acceleration/deceleration
- 15 Selectable preset speeds
- Dynamic braking (optional 20 Hp+)
- Fault trip output for customer use
- Buffered encoder output
- 9 Opto-isolated inputs and 4 programmable opto outputs
- 2 Programmable analog inputs and 2 analog meter outputs
- NEMA 1 enclosure standard 1-800 Hp "E, EO" models
- NEMA 4X enclosure standard 1-15 Hp "W" models
- PID Setpoint Control
- UL/cUL Listed

Environmental and Operating Conditions

- Input voltage - 1 or 3 phase 200-240 VAC $\pm 10\%$, 3 phase 380-480 VAC $\pm 10\%$, 3 phase 550-600 VAC $\pm 10\%$
- Input frequency - 50 or 60Hz $\pm 5\%$
- Service factor - 1.0
- Duty - continuous
- Humidity - 90% max RH non-condensing
- Altitude - 3300 feet max without derate

Operator Keypad

- Digital speed control
- Forward command
- Reverse command
- Stop command
- Jog speed
- Display 32 character alpha-numeric
- Local/Remote key
- Remote mount to 100 feet
- Membrane keys with tactile feel
- NEMA 4X enclosure when panel mounted

Protective Features

- Programmable auto or manual restart at momentary power loss
- Programmable security lockout
- DC bus charge indicator
- Motor overspeed
- Adjustable current limit
- Isolated control circuitry
- Digital display for faults:
 - Overtemperature
 - Overvoltage
 - Undervoltage
 - Overload
 - Overcurrent
 - Ground fault
 - Heatsink thermal
 - External trip

Output Ratings	Overload Capacity	150% for 60 seconds, 170-200% for 3 seconds constant torque				
	Frequency	0-500Hz				
	Voltage	0-Maximum Input Voltage (RMS)				
	Phase	Three Phase or Single Phase with derate				
Input Ratings	Frequency	50 Hz		60 Hz		
	Voltage	180-230 VAC	340-457 VAC	180-264 VAC	340-528 VAC	495-660 VAC
	Phase	Three Phase or Single Phase with derate				
Control Spec	Impedance	1% minimum required for sizes C2, F, G, G2; 3% minimum for sizes A, B, D and E				
	Method	Sinewave Carrier Input, PWM Output, closed loop vector control				
	Speed Setting	$\pm 5\text{vdc}$, $0-5\text{vdc}$, $\pm 10\text{vdc}$, $0-10\text{vdc}$, $4-20\text{mA}$, Digital via Keypad, RS-232, RS-485, DeviceNet, ModBus Plus, ProfiBus				
	Accel/Decel	0-3600 Seconds linear or S-curve to maximum speed				
	Dynamic Braking	20% Min on E,W models, EO models require optional external assemblies				
Motor Feedback	Motor Matching	Automatic tuning to motor with manual override				
	Type	Incremental encoder coupled to motor shaft				
	Lines/Rev	Selectable 60-15000, 1024 standard				
	Signal Output	2 channel in quadrature, 5vdc, differential				
	Marker Pulse	Required for position orientation				
	Power Input	5vdc, 300mA maximum				
	Max. Frequency	1 MHz at input to vector control				
LCD Display	Positioning	Buffered pulse train output for position loop controller (A & B in quadrature)				
	Setup	Parameter values for setup and review				
	Running	Motor RPM, output current, output voltage, local remote control, Fwd/Rev				
	Faults	Separate message for each trip, last 31 retained in memory				
Ambient Conditions	Diagnostics	Review of setup and operating parameters				
	Temperature	0-40 Deg C for UL listing				
	Cooling	Forced air included when required				
	Altitude	0-3300 feet without derate				
	Humidity	0-90% Max RH non-condensing for NEMA 1; 100% condensing for NEMA 4X				

Series 18H Vector Drive Output Ratings

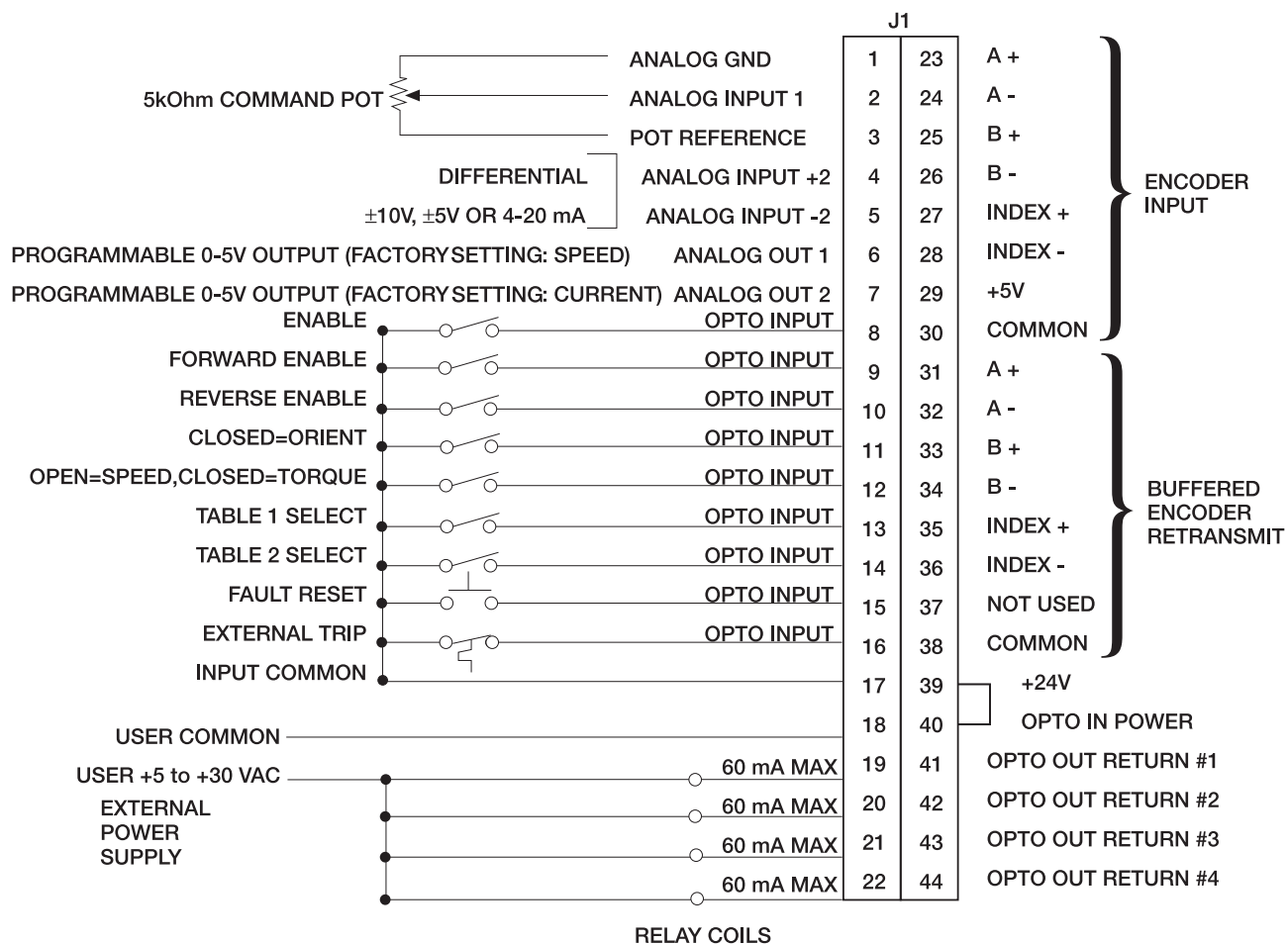
With Quad Rating each control can be setup to operate in one of four distinct output operating zones. The zones are defined by the PWM frequency, continuous output current, and peak output current. By selecting the desired Operating Zone the control will automatically set the PWM frequency, continuous current, and peak current to the proper values for the desired operating zone.

Catalog Number	Input Volt	Size	Standard 2.5 kHz PWM								Quiet 8.0 kHz PWM							
			Constant Torque				Variable Torque				Constant Torque				Variable Torque			
			HP	kW	IC	IP	HP	kW	IC	IP	HP	kW	IC	IP	HP	kW	IC	IP
ZD18H201-E	230	A	1	0.75	4.2	8.4	2	1.5	7	8.1	0.75	0.56	3.2	6.4	1	0.75	4.2	4.9
ZD18H202-E	230	A	2	1.5	7.0	14	3	2.2	10	12	1	0.75	4.2	8.4	2	1.5	7.0	8.1
ZD18H203-E	230	A	3	2.2	10	20	5	3.7	16	19	2	1.5	7.0	14	3	2.2	10	12
ZD18H205-E	230	A	5	3.7	16	32	7.5	5.5	22	25	3	2.2	10	20	5	3.7	16	19
ZD18H207-E	230	B	7.5	5.5	22	38	10	7.4	28	32	5	3.7	16	32	7.5	5.5	22	25
ZD18H210-E	230	B	10	7.4	28	50	15	11.1	42	48	7.5	5.5	22	44	10	7.4	28	32
ZD18H215-E	230	B	15	11.1	42	71	15	11.1	42	48	10	7.4	28	48	15	11.1	42	48
ZD18H220-EO	230	C2	20	14.9	55	110	25	18.6	68	78	15	11.1	42	92	20	14.9	54	62
ZD18H225-EO	230	C2	25	18.6	68	116	30	22.3	80	92	20	14.9	54	92	25	18.6	68	78
ZD18H230-EO	230	C2	30	22.3	80	136	30	22.4	80	92	25	18.6	70	122	25	18.6	68	78
ZD18H240-MO	230	D	40	29.8	105	200	50	37.2	130	150	30	22.3	80	160	40	29.8	104	120
ZD18H250-MO	230	D	50	37.2	130	225	50	37.2	130	150	40	29.8	105	183	50	37.2	130	150
ZD18H401-E	460	A	1	0.75	2.1	4.2	2	1.5	4.0	5.0	0.75	0.56	1.6	3.2	1	0.75	2.1	2.5
ZD18H402-E	460	A	2	1.5	4.0	8.0	3	2.2	5.0	6.0	1	0.75	2.1	4.2	2	1.5	4.0	5.0
ZD18H403-E	460	A	3	2.2	5.0	10	5	3.7	8.0	10	2	1.5	4.0	8.0	3	2.2	5.0	6.0
ZD18H405-E	460	A	5	3.7	8.0	16	7.5	5.5	11	13	3	2.2	5.0	10	5	3.7	8.0	10
ZD18H407-E	460	A	7.5	5.5	11	19	10	7.4	14	17	5	3.7	8.0	16	7.5	5.5	11	13
ZD18H410-E	460	B	10	7.4	14	28	15	11.1	21	25	7.5	5.5	11	22	10	7.4	14	17
ZD18H415-E	460	B	15	11.1	21	36	20	14.9	27	31	10	7.4	15	30	15	11.1	21	25
ZD18H420-EO	460	C2	20	14.9	27	50	25	18.6	34	39	15	11.1	21	46	20	14.9	27	31
ZD18H425-EO	460	C2	25	18.6	34	58	30	22.3	40	46	20	14.9	27	46	25	18.6	34	39
ZD18H430-EO	460	C2	30	22.3	40	68	40	29.8	52	60	25	18.6	35	61	30	22.3	40	46
ZD18H440-EO	460	C2	40	29.8	55	94	50	37.2	65	75	30	22.3	40	68	40	29.8	52	60
ZD18H450-EO	460	D	50	37.2	65	115	60	44.8	80	92	40	29.8	55	92	50	37.2	65	75
ZD18H460-EO	460	D	60	44.7	80	140	75	56	100	115	50	37.2	65	122	60	44.7	80	92
ZD18H475-EO	460	E	75	56	100	200	100	75	125	144	60	44.7	80	160	75	56	100	115
ZD18H4100-EO	460	E	100	75	125	220	125	93	160	184	75	56	100	183	100	75	125	144
ZD18H4150V-EO	460	E	150	112	180	269	150	112	180	207	100	75	125	240	125	93	160	184
ZD18H4150-EO	460	F	150	112	190	380	200	149	240	276	125	93	150	260	150	112	170	200
ZD18H4200-EO	460	F	200	149	250	500	250	186.5	310	360	150	112	190	380	175	131	210	240
ZD18H4250-EO	460	F	250	187	310	620	300	224	370	430	200	149	250	500	250	187	310	360
ZD18H4300-EO	460	G2	300	224	370	630	350	261	420	490	-	-	-	-	-	-	-	-
ZD18H4350-EO	460	G2	350	261	420	720	400	298	480	560	-	-	-	-	-	-	-	-
ZD18H4400-EO	460	G2	400	298	480	820	450	336	540	620	-	-	-	-	-	-	-	-
ZD18H4450-EO	460	G	450	336	540	855	500	373	590	680	-	-	-	-	-	-	-	-
ZD18H4500-EO	460	G+	500	373	590	1180	600	447	710	820	-	-	-	-	-	-	-	-
ZD18H4600-EO	460	G+	600	447	710	1210	700	522	830	960	-	-	-	-	-	-	-	-
ZD18H4700-EO	460	G+	700	522	830	1500	800	597	950	1100	-	-	-	-	-	-	-	-
ZD18H4800-EO	460	G+	800	597	950	1710	900	671	1070	1230	-	-	-	-	-	-	-	-
ZD18H501-E	575	A	1	0.75	1.7	3.4	2.0	1.5	3.0	4.0	0.75	0.56	1.3	2.6	1	0.75	1.7	2.0
ZD18H502-E	575	A	2	1.5	3.0	6.0	3	2.2	4.0	5.0	1	0.75	1.7	3.4	2	1.5	3.0	4.0
ZD18H503-E	575	A	3	2.2	4.0	8.0	5	3.7	7.0	8.0	2	1.5	3.0	6.0	3	2.2	4.0	5.0
ZD18H505-E	575	A	5	3.7	7.0	14	7.5	5.5	9.0	11	3	2.2	4.0	8.0	5	3.7	7.0	8.0
ZD18H507-E	575	A	7.5	5.5	9.0	18	10	7.4	11	13	5	3.7	7.0	14	7.5	5.5	9	11
ZD18H510-E	575	B	10	7.4	11	22	15	11.1	17	20	7.5	5.5	9	18	10	7.4	11	13
ZD18H515-E	575	B	15	11.1	17	34	20	14.9	22	26	10	7.4	11	22	15	11.1	17	20
ZD18H520-EO	575	C2	20	14.9	22	44	25	18.6	27	31	15	11.1	17	34	20	14.9	22	25
ZD18H525-EO	575	C2	25	18.6	27	54	30	22.3	32	37	20	14.9	22	44	25	18.6	27	31
ZD18H530-EO	575	C2	30	22.3	32	54	40	29.8	41	47	25	18.6	27	46	30	22.3	32	37
ZD18H540-EO	575	C2	40	29.8	41	70	50	37.2	52	60	25	18.6	27	54	30	22.3	32	37
ZD18H550-EO	575	D	50	37.2	52	92	60	44.7	62	71	40	29.8	41	73	50	37.2	52	60
ZD18H560-EO	575	D	60	44.7	62	109	60	44.7	62	71	50	37.2	52	91	60	44.7	62	71
ZD18H575-EO	575	E	75	56	77	155	100	75	100	115	-	-	-	-	-	-	-	-
ZD18H5100-EO	575	E	100	75	100	200	125	93	125	145	-	-	-	-	-	-	-	-
ZD18H5150V-EO	575	E	150	112	145	260	150	112	145	166	-	-	-	-	-	-	-	-
ZD18H5150-EO	575	F	150	112	150	300	200	149	200	230	-	-	-	-	-	-	-	-
ZD18H5200-EO	575	F	200	149	200	400	250	186	250	290	-	-	-	-	-	-	-	-
ZD18H5300-EO	575	G	300	224	290	580	350	261	340	400	-	-	-	-	-	-	-	-
ZD18H5350-EO	575	G	350	261	340	680	400	298	390	450	-	-	-	-	-	-	-	-
ZD18H5400-EO	575	G	400	298	390	680	450	336	440	510	-	-	-	-	-	-	-	-

NOTE: -E is NEMA 1 enclosure w/built-in dynamic braking; -EO is NEMA 1 enclosure requires external braking kit.
-MO is protected chassis enclosure (not NEMA 1) and requires an external braking kit.

Typical Vector Drive Remote Control Connections

Bipolar Speed or Torque Control Operating Mode Shown



Series 18H Washdown Vector Drive

When used with a Baldor Washdown Vector Drive® motor, or other motors with a feedback device, Baldor 18H Washdown Vector controls provide precise positioning, speed control and holding torque, plus full-rated torque at zero speed. Ideal for food processing conveyor applications with load variations and frequent stop/starts. These controls may be used in new installations, replacements or original equipment. Features include a NEMA 4X enclosure that can withstand frequent washdowns, and a 32-character alphanumeric keypad for easy set-up and adjustment.



230 and 460 Volt

Catalog Number	Input Volt	Size	Standard 2.5 kHz PWM								Quiet 8.0 kHz PWM							
			Constant Torque				Variable Torque				Constant Torque				Variable Torque			
			HP	kW	IC	IP	HP	kW	IC	IP	HP	kW	IC	IP	HP	kW	IC	IP
ZD18H201-W	230	A	1	0.75	4.2	8.4	2	1.5	7	8.1	0.75	0.56	3.2	6.4	1	0.75	4.2	4.9
ZD18H202-W	230	A	2	1.5	7.0	14	3	2.2	10	12	1	0.75	4.2	8.4	2	1.5	7.0	8.1
ZD18H203-W	230	A	3	2.2	10	20	5	3.7	16	19	2	1.5	7.0	14	3	2.2	10	12
ZD18H205-W	230	A	5	3.7	16	32	7.5	5.5	22	25	3	2.2	10	20	5	3.7	16	19
ZD18H207-W	230	B	7.5	5.5	22	38	10	7.4	28	32	5	3.7	16	32	7.5	5.5	22	25
ZD18H210-W	230	B	10	7.4	28	50	15	11.1	42	48	7.5	5.5	22	44	10	7.4	28	32
ZD18H215-W	230	B	15	11.1	42	71	15	11.1	42	48	10	7.4	28	48	15	11.1	42	48
ZD18H401-W	460	A	1	0.75	2.1	4.2	2	1.5	4.0	5.0	0.75	0.56	1.6	3.2	1	0.75	2.1	2.5
ZD18H402-W	460	A	2	1.5	4.0	8.0	3	2.2	5.0	6.0	1	0.75	2.1	4.2	2	1.5	4.0	5.0
ZD18H403-W	460	A	3	2.2	5.0	10	5	3.7	8.0	10	2	1.5	4.0	8.0	3	2.2	5.0	6.0
ZD18H405-W	460	A	5	3.7	8.0	16	7.5	5.5	11	13	3	2.2	5.0	10	5	3.7	8.0	10
ZD18H407-W	460	A	7.5	5.5	11	19	10	7.4	14	17	5	3.7	8.0	16	7.5	5.5	11	13
ZD18H410-W	460	B	10	7.4	14	28	15	11.1	21	25	7.5	5.5	11	22	10	7.4	14	17
ZD18H415-W	460	B	15	11.1	21	36	20	14.9	27	31	10	7.4	15	30	15	11.1	21	25
ZD18H501-W	575	A	1	0.75	1.7	3.4	2.0	1.5	3.0	4.0	0.75	0.56	1.3	2.6	1	0.75	1.7	2.0
ZD18H502-W	575	A	2	1.5	3.0	6.0	3	2.2	4.0	5.0	1	0.75	1.7	3.4	2	1.5	3.0	4.0
ZD18H503-W	575	A	3	2.2	4.0	8.0	5	3.7	7.0	8.0	2	1.5	3.0	6.0	3	2.2	4.0	5.0
ZD18H505-W	575	A	5	3.7	7.0	14	7.5	5.5	9.0	11	3	2.2	4.0	8.0	5	3.7	7.0	8.0
ZD18H507-W	575	A	7.5	5.5	9.0	18	10	7.4	11	13	5	3.7	7.0	14	7.5	5.5	9	11
ZD18H510-W	575	B	10	7.4	11	22	15	11.1	17	20	7.5	5.5	9	18	10	7.4	11	13
ZD18H515-W	575	B	15	11.1	17	34	20	14.9	22	26	10	7.4	11	22	15	11.1	17	20

NOTE: -W is NEMA 4X enclosure w/built-in dynamic braking.

Series 18H Custom Capabilities

Baldor offers a wide variation of custom capabilities for the Series 18H Vector Drives including:

- Custom Enclosures are available to meet a wide variety of environmental conditions including NEMA 12, 3R and 4X.
- Custom designs to incorporate liquid cooled heatsink or air-conditioned enclosure to reduce floor space.
- Shared Bus configurations to eliminate redundant power supplies and reduce power consumption.
- Line Regenerative capabilities using Series 22H Line Regen Vector Drive.
- High Power Vector Drives available through 1500 horsepower.

Expansion and Accessory Boards

Baldor offers a wide variety of plug-in expansion boards to allow the H Series controls to be interfaced with various inputs and outputs. One or two expansion boards may be mounted into the control to custom tailor the inputs, outputs, and feedback requirements to the application. Baldor also offers several expansion boards that will allow direct interfacing with popular PLC's.

Group 1 Boards

Isolated Input Board - EXB003A04 (10-30 Volts)

Isolated Input Board - EXB003A05 (90-130 Volts)

This board replaces the opto inputs on the main control board with isolated inputs. All inputs must be in the same voltage range and one side of all inputs is common. Screw terminals are provided for easy connection.

Master Pulse Reference/Pulse Follower - EXB005A01

This board is jumper selectable to create a master pulse reference based on the controls speed/direction command or selected as an isolated pulse follower. The follower can be ratioed up or down to the master pulse through the control keypad. The master or follower pulse train can also be configured as a two channel quadrature pulse with complements or configured as a one channel pulse train for speed and one channel for direction. As a follower, the pulse train will be retransmitted to the next follower as received from the master.

DC Tach Interface - EXB006A01

Allows a DC Tachometer to be used as a feedback or command signal to the controls built-in PID Set Point Controller. Jumper selectable for 7, 10, 15, 20, 30, 50, 60, 100, 200, 250 VDC per 1000 RPM tachometers with a software trim for 10% tolerance. Screw terminals are provide for easy connection.

Isolated Encoder Feedback - EXB008A01

Allows an encoder to be used as a feedback or command signal to the controls built-in PID Set Point Controller. An isolated power supply is jumper selectable to provide 5, 12, and 15 VDC to power the encoder. A retransmit signal is also provided to retransmit two channels in quadrature with complements or jumper selectable for one channel and index channel both with complements.

Group 2 Boards

Four Output Relay/3-15 PSI Pneumatic Interface - EXB004A01

Converts 3-15 PSI air pressure to 0-10 VDC or 10-0 VDC (inverted) to be used as a command or feedback signal. Also includes four output relays to replace the four outputs on the main control board. Two relays are jumper selectable for N.O. or N.C., rated for 230 VAC , 5 Amps max and two form "C" relays (N.O. and N.C.). Please note that relay outputs are dry contacts with no power supplied from the control. Screw terminals are provided for relay connections and air hose connects to 1/8" O.D. nipple on expansion board.

High Resolution Analog Board - EXB007A02

Contains one high resolution input channel to replace Analog Input #2 on the main control board. The resolution will be as follows: ± 10 VDC = 16 bit, 0-10 VDC = 15 bit, ± 5 VDC = 15 bit, 0-5 VDC = 14 bit, 4-20 mA = 15 bit. Also contains two high resolution analog outputs to replace Analog Output #1 and #2 on the main control board. The outputs are selectable for ± 10 VDC, 0-10 VDC, and 4-20 mA with inverting capability. Requires 100 second warm up period for full 16 bit resolution. 12 bit minimum. Screw terminals are provided for easy connection.

Two Analog Output/ Three Relay Output Board - EXB010A01

Provides two isolated analog outputs each with 0-5 VDC, 0-10 VDC, or 4-20 mA capability. Also includes three relay outputs jumper selectable for N.O. or N.C. rated for 230 VAC, 5 amps maximum. Uses screw terminals for connection.

RS232/RS485 Serial Communication - EXB012A01

Allows serial communication for commands and monitoring. 115.2K baud maximum transmission rate. Screw terminals are provided for easy connection.

DeviceNet Communication Board - EXB013A01

Allows connection to DeviceNet communications bus. Uses plug in terminals for connection.



Profibus DP Communication Board - EXB014A01

Allows connection to Profibus DP communications bus. Uses plug in terminals for connection.

Modbus Plus Communication Board - EXB015A01

Allows connection to Modbus Plus communications bus. Uses plug in terminals for connection.

Group 1 and Group 2 Ordering/Mounting Information

• NOTE: Expansion boards plug into the main control board inside the control. When using one expansion board, either a Group 1 or Group 2 board will connect to the main control board. When two expansions boards are used, one must be from Group 1 and one from Group 2. The Group 1 board will connect to the main control board and the Group 2 board will connect to a stacking connector on the Group 1 board.

Accessory Boards

Isolated Input/2 Relay Output Accessory Board - ACB003A01

Contains 9 isolated inputs for 90-130 VAC. Also has 2 Relay outputs, Form C: N.O. and N.C. Accessory board mounts in expansion board slot but uses wiring harness to connect to motor control card.

Keypad Extension Cable

For the convenience of our customers, we offer a connected plug/cable assembly. This assembly provides the connectors from the keypad to the control for remote keypad operation.



Catalog Number	Cable Extension Length	Approx. Shpg. Wgt.
CBLH015KP	5 Feet (1.5 Meter)	2
CBLH030KP	10 Feet (3.0 Meter)	4
CBLH046KP	15 Feet (4.6 Meter)	6
CBLH061KP	20 Feet (6.1 Meter)	8
CBLH091KP	30 Feet (9.1 Meter)	12
CBLH152KP	50 Feet (15.2 Meter)	18
CBLH229KP	75 Feet (22.9 Meter)	26
CBLH305KP	100 Feet (30.5 Meter)	30

Dynamic Braking Assemblies (RBA)

Dynamic Braking Assemblies include braking transistor and braking resistors completely assembled and mounted into a NEMA 1 enclosure. Select braking assembly from table with adequate maximum braking torque(%) and continuous regenerative power(Watts) capacity to meet load requirements. For use with -EO controls.

Maximum Braking Torque in % of Motor Rating														Cont.	Catalog	Number
HP		20	25	30	40	50	60	75	100	150V	150	200	250	Watts		
Input Voltage	200	90%	75%	60%	45%	36%	-	-	-	-	-	-	-	600	RBA2-610	
	to	150%	125%	100%	75%	62%	-	-	-	-	-	-	-	1800	RBA2-1806	
	240	150%	150%	150%	115%	92%	-	-	-	-	-	-	-	4000	RBA2-4004	
	380	150%	150%	120%	90%	72%	60%	48%	36%	28%	-	-	-	600	RBA4-620	
	to	150%	150%	120%	90%	72%	60%	48%	36%	28%	-	-	-	1800	RBA4-1820	
	480	150%	150%	150%	150%	150%	120%	96%	72%	56%	48%	36%	29%	4000	RBA4-4010	
	550	150%	150%	120%	90%	72%	60%	48%	36%	28%	-	-	-	600	RBA5-624	
	To	150%	150%	120%	90%	72%	60%	48%	36%	28%	-	-	-	1800	RBA5-1824	
600	150%	150%	150%	150%	150%	120%	96%	72%	56%	-	-	-	4000	RBA5-4014		

Dynamic Braking Resistor Assemblies (RGA)

Dynamic Braking Resistor Assemblies include braking resistors completely assembled and mounted into a NEMA 1 enclosure. For 20 hp and above (-EO Controls), select the braking resistor from the table with the matching ohms for the RTA selected and adequate continuous watts capacity to meet load requirements. For 1 to 15 hp (-E Controls) select the braking resistor that has correct ohm value for the control and adequate continuous watts capacity to meet load requirements.

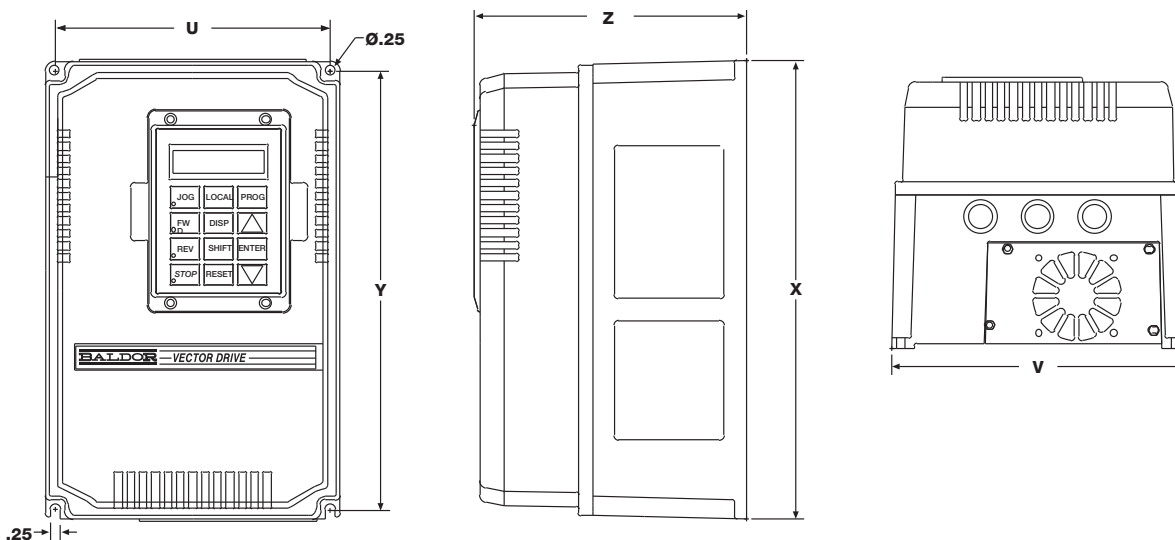
Input Volts	HP	Total OHMS	Continuous Rated Watts						
			600	1200	2400	4800	6400	9600	14200
230	1-2	30	RGA630	RGA1230	RGA2430				
	3-5	20	RGA620	RGA1220	RGA2420	RGA4820			
	7.5-10	10		RGA1210	RGA2410	RGA4810			
	15-20	6		RGA1206	RGA2406	RGA4806			
	25-40	4		RGA1204	RGA2404	RGA4804			
460	50	2			RGA2402	RGA4802	RGA6402	RGA9602	RGA14202
	1-3	120	RGA6120	RGA12120	RGA24120				
	5-7.5	60	RGA660	RGA1260	RGA2460	RGA4860			
	10	30	RGA630	RGA1230	RGA2430	RGA4830			
	15-25	20	RGA620	RGA1220	RGA2420	RGA4820			
	30-60	10		RGA1210	RGA2410	RGA4810			
	75-250	4		RGA1204	RGA2404	RGA4804	RGA6404	RGA9604	RGA14204
575	300-450	2			RGA2402	RGA4802	RGA6402	RGA9602	RGA14202
	1-2	200	RGA6200	RGA12200	RGA24200				
	3-5	120	RGA6120	RGA12120	RGA24120				
	7.5-10	60	RGA660	RGA1260	RGA2460	RGA4860			
	15	30	RGA630	RGA1230	RGA2430	RGA4830			
	20-30	24		RGA1224	RGA2424	RGA4824			
	40-150	14			RGA2414	RGA4814	RGA6414	RGA9614	RGA14214

Dynamic Braking Transistor Assemblies (RTA)

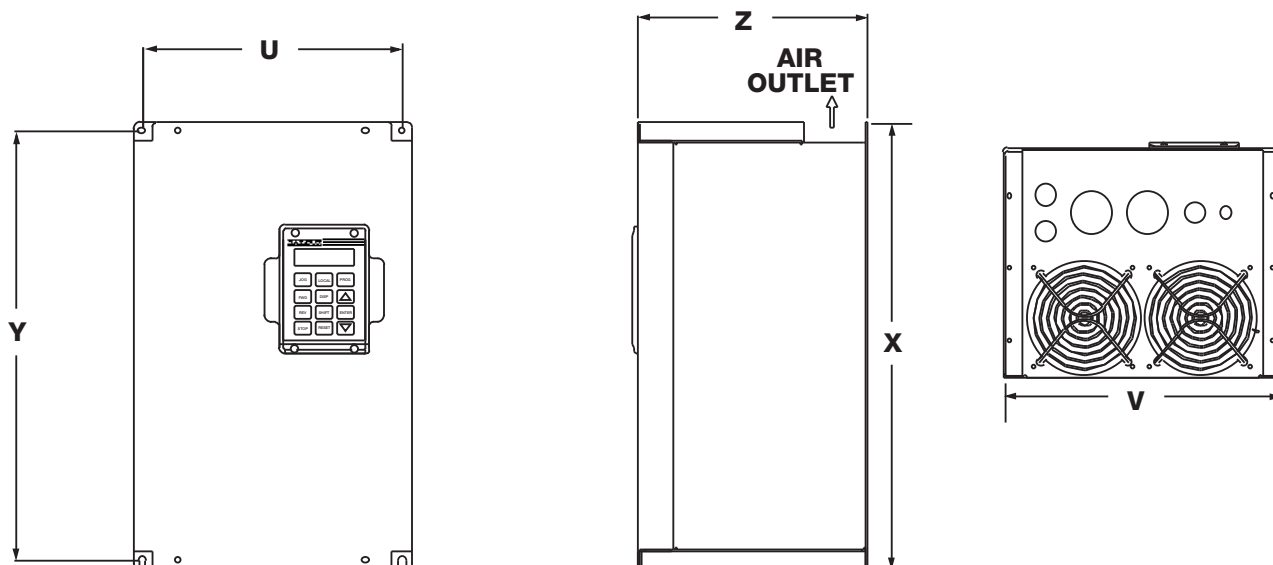
Dynamic Braking Transistor Assemblies include braking transistor completely assembled and mounted into a NEMA 1 enclosure, to be used with External Dynamic Braking Resistor Assemblies (RGA). Select RGA assembly with matching minimum OHMS and continuous regenerative power (Watts) capacity to meet load requirements. For use with -EO Controls.

HP	Maximum Braking Torque in % of Motor Rating									
	208-230 VAC			380-480 VAC				550-600 VAC		
20	150%	150%	150%	150%	150%	150%	150%	150%	150%	150%
25	125%	150%	150%	150%	150%	150%	150%	150%	150%	150%
30	100%	150%	150%	120%	150%	150%	150%	150%	150%	150%
40	75%	115%	150%	90%	150%	150%	150%	127%	150%	150%
50	62%	92%	150%	72%	150%	150%	150%	100%	150%	150%
60	—	—	—	60%	150%	150%	150%	85%	145%	150%
75	—	—	—	48%	96%	150%	150%	68%	116%	150%
100	—	—	—	36%	72%	150%	150%	50%	87%	150%
150V	—	—	—	28%	56%	150%	150%	40%	70%	150%
150	—	—	—	—	48%	126%	150%	34%	58%	150%
200	—	—	—	—	36%	95%	150%	25%	44%	150%
250	—	—	—	—	29%	76%	150%	—	35%	122%
300	—	—	—	—	—	62%	125%	—	29%	100%
350	—	—	—	—	—	54%	108%	—	—	87%
400	—	—	—	—	—	47%	94%	—	—	76%
450	—	—	—	—	—	41%	84%	—	—	68%
Min. Ohms	6	4	2	20	10	4	2	24	14	4
Cat. No.	RTA2-6	RTA2-4	RTA2-2	RTA4-20	RTA4-10	RTA4-4	RTA4-2	RTA5-24	RTA5-14	RTA5-4

Outline and Dimensions



Dimensions - in. (mm)					
Size	Outside			Mounting	
	Height(X)	Width(V)	Depth(Z)	Height(Y)	Width(U)
A	12.272 (312)	7.974 (203)	7.120 (181)	11.5 (292)	7.2 (183)
B	15.4 (391)	10.0 (254)	7.1 (180)	14.6 (371)	9.2 (234)



NOTE: Size C2, E and F controls can also be mounted in a thru wall configuration. Please contact Baldor for thru wall mounting dimensions.

Dimensions - in. (mm)					
Size	Outside			Mounting	
	Height(X)	Width(V)	Depth(Z)	Height(Y)	Width(U)
C2	16.98 (431)	10.5 (267)	9.66 (245)	15.58 (396)	7.76 (197)
D	25.0 (635)	14.5 (368)	10.0 (254)	24.25 (616)	13.5 (343)
E	30.0 (762)	17.7 (450)	12.0 (305)	29.0 (737)	14.25 (362)
F	45.0 (1143)	27.0 (686)	13.0 (330)	44.0 (1118)	22.75 (578)
G	93.0 (2362)	31.5 (800)	23.6 (600)	FLOOR MOUNT	
G2	65.98 (1676)	31.6 (803)	23.49 (597)	FLOOR MOUNT	

**Contact your nearest Baldor District Office at these
World Wide locations, or visit www.baldor.com**

UNITED STATES

ARIZONA

PHOENIX
4211 S 43RD PLACE
PHOENIX, AZ 85040
PHONE: 602-470-0407
FAX: 602-470-0464

CALIFORNIA

LOS ANGELES
6480 FLOTILLA
COMMERCE, CA 90040
PHONE: 323-724-6771
FAX: 323-721-5859

HAYWARD

21056 FORBES STREET
HAYWARD, CA 94545
PHONE: 510-785-9900
FAX: 510-785-9910

COLORADO

DENVER
2520 W BARBERRY PLACE
DENVER, CO 80204
PHONE: 303-623-0127
FAX: 303-595-3772

CONNECTICUT

WALLINGFORD
65 SOUTH TURNPIKE RD
WALLINGFORD, CT 06492
PHONE: 203-269-1354
FAX: 203-269-5485

FLORIDA

**TAMPA/PUERTO RICO/
VIRGIN ISLANDS**
3906 EAST 11TH AVENUE
TAMPA, FL 33605
PHONE: 813-248-5078
FAX: 813-247-2984

GEORGIA

ATLANTA
62 TECHNOLOGY DR.
ALPHARETTA, GA 30005
PHONE: 770-772-7000
FAX: 770-772-7200

ILLINOIS

CHICAGO
1601 FRONTENAC ROAD
NAPERVILLE, IL 60563
PHONE: 630-848-5100
FAX: 630-848-5110

INDIANA

INDIANAPOLIS
5525 W. MINNESOTA ST
INDIANAPOLIS, IN 46241
PHONE: 317-246-5100
FAX: 317-246-5110
800-428-4141

IOWA

DES MOINES

1901 BELL AVENUE, STE 7
DES MOINES, IA 50315
PHONE: 515-244-9996
FAX: 515-244-6124

MARYLAND

BALTIMORE

6660 SANTA BARBARA RD.
SUITE 22-24
ELK RIDGE, MD. 21075
PHONE: 410-579-2135
FAX: 410-579-2677

MASSACHUSETTS

BOSTON

317 BROOKS ST.
WORCESTER, MA 01606
PHONE: 508-854-0708
FAX: 508-854-0291

MICHIGAN

DETROIT

33782 STERLING
PONDS BLVD.
STERLING HEIGHTS,
MI 48312
PHONE: 586-978-9800
FAX: 586-978-9969

GRAND RAPIDS

668 3 MILE ROAD NW
GRAND RAPIDS, MI 49504
PHONE: 616-785-1784
FAX: 616-785-1788

MINNESOTA

MINNEAPOLIS

21080 134TH AVE. NORTH
ROGERS, MN 55374
PHONE: 763-428-3633
FAX: 763-428-4551

MISSOURI

ST LOUIS

422 INDUSTRIAL DRIVE
MARYLAND HEIGHTS,
MO 63043
PHONE: 314-298-1800
FAX: 314-298-7660

KANSAS CITY

915 N W PLATTE VALLEY DR
RIVERSIDE, MO 64150
PHONE: 816-587-0272
FAX: 816-587-3735

NEW YORK

AUBURN

ONE ELLIS DRIVE
AUBURN, NY 13021
PHONE: 315-255-3403
FAX: 315-253-9923

NORTH CAROLINA

GREENSBORO

1220 ROTHERWOOD RD
GREENSBORO, NC 27406
PHONE: 336-272-6104
FAX: 336-273-6628

OHIO

CINCINNATI

2900 EARHART COURT
SUITE 200
HEBRON, KY 41048
PHONE: 859-586-0222
FAX: 859-586-0779

CLEVELAND

8929 FREEWAY DRIVE
MACEDONIA, OH 44056
PHONE: 330-468-4777
FAX: 330-468-4778

OKLAHOMA

TULSA

2 EAST DAWES
BIXBY, OK 74008
PHONE: 918-366-9320
FAX: 918-366-9338

OREGON

PORTLAND

20393 SW AVERY COURT
TUALATIN, OR 97062
PHONE: 503-691-9010
FAX: 503-691-9012

PENNSYLVANIA

PHILADELPHIA

1035 THOMAS BUSCH
MEMORIAL HIGHWAY
PENNSAUKEN, NJ 08110
PHONE: 856-661-1442
FAX: 856-663-6363

PITTSBURGH

616H BEATTY ROAD
MONROEVILLE, PA 15146
PHONE: 412-380-7244
FAX: 412-380-7250

TENNESSEE

MEMPHIS

4000 WINCHESTER ROAD
MEMPHIS, TN 38118
PHONE: 901-365-2020
FAX: 901-365-3914

TEXAS

HOUSTON

4647 PINE TIMBERS
SUITE # 135
HOUSTON, TX 77041
PHONE: 713-895-7062
FAX: 713-690-4540

DALLAS

3040 QUEBEC
DALLAS, TX 75247
PHONE: 214-634-7271
FAX: 214-634-8874

ODESSA

6968 EAST COMMERCE
ODESSA, TX 79762
PHONE: 432-367-2707
FAX: 432-367-9877

UTAH

SALT LAKE CITY

2230 SOUTH MAIN STREET
SALT LAKE CITY, UT 84115
PHONE: 801-832-0127
FAX: 801-832-8911

WISCONSIN

MILWAUKEE

2725 SOUTH 163RD ST
NEW BERLIN, WI 53151
PHONE: 262-784-5940
FAX: 262-784-1215

INTERNATIONAL SALES

FORT SMITH, AR

BALDOR ELECTRIC CO
FORT SMITH, AR 72902
PHONE: 479-646-4711
FAX: 479-648-5895

CANADA

EDMONTON, ALBERTA

4053-92 STREET
EDMONTON, ALBERTA
T6E6R8
PHONE: 780-434-4900
FAX: 780-438-2600

OAKVILLE, ONTARIO

2750 COVENTRY ROAD
OAKVILLE, ONTARIO
L6H6R1
PHONE: 905-829-3301
FAX: 905-829-3302

MONTREAL, QUEBEC

1844 WILLIAM STREET
MONTREAL, QUEBEC
H3J1R5
PHONE: 514-933-2711
FAX: 514-933-8639

VANCOUVER,

BRITISH COLUMBIA

1538 KEBET WAY
PORT COQUITLAM, BC
V3C 5M5
PHONE: 604-421-2822
FAX: 604-421-3113

WINNIPEG, MANITOBA

54 PRINCESS STREET
WINNIPEG, MANITOBA
R3B1K2
PHONE: 204-942-5205
FAX: 204-956-4251

AUSTRALIA

UNIT 3, 6 STANTON ROAD
SEVEN HILLS, NSW 2147,
AUSTRALIA
PHONE: (61) (2) 9674 5455
FAX: (61) (2) 9674 2495

UNIT 8, 5 KELLETTS ROAD
ROWVILLE, VICTORIA, 3178
AUSTRALIA
PHONE: (03) 9753 4355
FAX: (03) 9753 4366

CENTROAMERICA

RESIDENCIAL PINARES DE
SUIZA POL. 15 #44, NVA.
SAN SALVADOR
EL SALVADOR, CENTRO
AMERICA
PHONE: (503) 288-1519
FAX: (503) 288-1518

SUDAMERICA

9109 0818, ZONA 6
BETHANIA
PANAMA CITY,
REP. DE PANAMA
PHONE: (507) 261-5347
FAX: (507) 261-5355

CHINA

SHANGHAI JIAHUA
BUSINESS CENTER
ROOM NO. C-203
808 HONG QIAO ROAD
SHANGHAI 200021
PHONE: 86-21-64473060
FAX: 86-21-64078620

GERMANY

DIESELSTRASSE 22
D-85551 KIRCHHEIM
MUNICH, GERMANY
PHONE: (49) (89) 90508 - 0
FAX: (49) (89) 90508 - 491

ITALY

BALDOR ASR AG
MENDRISIO OFFICE
VIA BORROMINI, 20A
6850 MENDRISIO
SWITZERLAND
PHONE: 0041 91 640 99 50
FAX: 0041 91 630 26 33

JAPAN

DIABLDG 802
2-21-1 TSURUYA,
KANAGAWA-KU
YOKOHAMA, 221-0834,
JAPAN
PHONE: 81-45-412-4506
FAX: 81-45-412-4507

KOREA

ROOM 210
BUPYEONG INDUSTRIAL
COMMERCIAL COOP.
396-13 CHEONGCHEON
2-DONG, BUPYEONG-GU
INCHEON, KOREA, 403-858
PHONE: 82-32-508-3252
FAX: 82-32-508-3253

MÉXICO

BLVD. AL AEROPUERTO,
KM. 2
LEÓN 37545,
GUANAJUATO, MÉXICO
PHONE: 52-477-761-2030
FAX: 52-477-761-2010

SINGAPORE

51 KAKI BUKIT ROAD 2
K B WAREHOUSE
COMPLEX
SINGAPORE 417863
PHONE: (65) 6 744 2572
FAX: (65) 6 747 1708

SWITZERLAND

POSTFACH 73
SCHUTZENSTRASSE 59
CH-8245 FEUERTHALEN
SWITZERLAND
PHONE: (41) (52) 6474700
FAX: (41) (52) 6592394

TAIWAN

ROOM R, 2F, NO. 124
CHUNG CHENG ROAD,
SHIHLIN DIST.
TAIPEI 11141
PHONE: 886-2-2835-1666
EXT. 802
FAX: 886-2-2835-1717

UNITED KINGDOM

6 BRISTOL DISTRIBUTION
PARK
HAWKLEY DRIVE
BRISTOL BS32 0BF U.K.
PHONE: 44 1454 850000
FAX: 44 1454 859001

Baldor Electric Company
P.O. Box 2400
Fort Smith, AR 72902-2400 U.S.A.
Ph (479) 646-4711 • Fax (479) 648-5792
International Fax (479) 648-5895
www.baldor.com

